

IMPORTANT WARNINGS

Safety warnings



Danger!

Failure to observe the warning may result in life threatening injury by electric shock.

- Before plugging the appliance into the mains, make sure that:
 - The voltage indicated on the appliance rating plate corresponds to your mains voltage;
 - The mains socket is earthed and has a minimum rating of 16A.
 - Professional or inappropriate use or failure to observe the safety instructions absolves the manufacturer of all liability.
- Make sure the power cord does not come into contact with parts of the appliance which become hot during use. If the power cord is damaged, it must be replaced by the manufacturer or the manufacturer's customer services in order to avoid all risk.
- Before putting the appliance away, removing the cooking plates or performing cleaning and maintenance, turn the appliance off and unplug from the mains. Ensure that the appliance has completely cooled down.
- Never use the appliance outdoors.
- Never immerse the appliance in water.
- The appliance must not be operated by an external timer or a separate remote control system.
- Use extension cords complying with current safety regulations and standards only. Ensure they are in proper working condition, with an adequate cross section.
- Never unplug from the mains socket by pulling on the cord.



Important!

Failure to observe the warning could result in injury or damage to the appliance.

- Clean the outside of the cooking plate with a soft sponge or cloth dampened with water and mild detergent.
- This appliance is designed to cook food. It must never be used for other purposes, modified or tampered with in any way.

- This is an household appliance only. It is not intended to be used in: staff kitchen areas in shops, offices and other working environments; farm houses; by clients in hotels, motels and other residential type environments; bed and breakfast type environments.
- This appliance can be used by children aged from 8 years and above and persons with reduced physical, sensory or mental capabilities or lack of experience and knowledge if they have been given supervision or instruction concerning use of the appliance in a safe way and understand the hazards involved. Children shall not play with the appliance.
- Cleaning and user maintenance shall not be made by children unless they are aged from 8 years and supervised.
Keep the appliance and its cord out of the reach of children aged 8 and younger.
- Do not leave the appliance within reach of children or unattended while in operation.
- Never use the appliance without the cooking plates.
- Wait until the appliance is completely cold before putting away.
- Do not move the appliance during use.



Danger of burns!!

Failure to observe the warning could result in burns or scalds.

- When the appliance is in operation, the outside surfaces may become very hot. Always use the handgrip (2) or oven gloves if necessary.
- Remove or change the cooking plates when the appliance has completely cooled down.
- Temperature probe can only be used to measure the temperature of the food. When inserting in the food, be careful not to touch the heating parts!



Please note:

This symbol indicates recommendations and important information for the user.

- To avoid the risk of fire, do not cook food wrapped in

plastic film or tinfoil or in plastic bags.

- After cleaning, the cooking plates must be dried before replacing them in the appliance.



This appliance conforms to EC Regulation 1935/2004 on materials and articles intended to come into contact with food.

Disposing of the appliance



The appliance must not be disposed of with household waste, but taken to an authorised waste separation and recycling centre.

DESCRIPTION

1. **Base and cover:** solid stainless steel structure with self-adjusting cover.
2. **Handgrip:** strong cast metal handgrip to adjust the upper plate/cover according to the thickness of the food.
3. **Plate release buttons:** press to release and remove the plate.
4. **Grill plates lock/release device and Height adjustment lever:** to lock the upper plate/cover at the required height, to prepare food that does not require pressing.
5. **Hinge release lever:** enables the appliance to be fully opened to cook in the flat position.
6. **Height adjustment steps.**
7. **ON light.**
8. **Start/stop button.**
9. **Lower plate thermostat dial:** to adjust the temperature from 60°C to 240°C, or switch off the lower plate.
10. Lower plate "SEAR" button.
11. Sandwich function button.
12. Hamburger function button.
13. Keep warm function button.
14. **Time/ temperature probe button "-":** to adjust the cooking time (decreasing) or the target temperature of probe.
15. **Time/ temperature probe button "+":** to adjust the cooking time (increasing) or the target temperature of probe.
16. **Upper plate thermostat dial:** to adjust the temperature from 60°C to 240°C, or switch off the upper plate.
17. Upper plate "SEAR" button.
18. Temperature probe connector.
19. **Removable plates:** non-stick, dishwasher safe, easy to clean. THE NUMBER AND THE TYPE OF PLATES CAN

RANGE ACCORDING TO MODEL.

- 19a. **Grill plate:** perfect for grilling steak, hamburger, chicken and vegetables.
- 19b. **Griddle plate:** to prepare perfect pancakes, eggs, bacon and shellfish (only one plate for CGH112DP).
- 19c. **Upper waffle plate:** to prepare all kind of waffles.
- 19d. **Lower waffle plate:** to prepare all kind of waffles (available with CGH1130 or as a separate accessory).
20. **Grease tray:** integrated with appliance and removable for easy cleaning.
21. Waffle dosing cup.
22. Temperature probe and case.

USING FOR THE FIRST TIME

Remove all packaging and labels from the plate. Before throwing the packing material away, make sure you have removed all parts of the new appliance.

We recommend you keep the box and packing to re-use in the future.



Please note: Before use, clean the base, cover and dials with a damp cloth to remove dust accumulated during transport. Clean the cooking plates and grease tray thoroughly. The plates and grease tray are dishwasher safe.



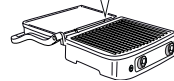
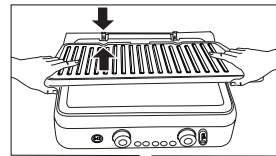
Please note: The first time you use the appliance, it may give off a slight odor and a little smoke. This is normal and common to all appliances with non-stick surfaces.



Please note: the removable cooking plates (grill and griddle) are fully interchangeable on the appliance.

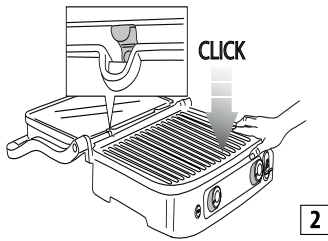
Inserting the cooking plates

- Place the appliance in the flat position (see figure 1). Insert one plate at a time.



1

- Each grill or griddle plates can be inserted in either the top or bottom housing (see figure 2), except waffle plates.



To remove the plates

Identify the plate release buttons (3) on the right side. Press the button decisively to eject the plate from the base. Hold the plate with both hands, slide it along the metal supports and remove it from the base. Press the other release button to remove the second plate, following the same operations.

⚠ Danger of burns!! Remove or change the cooking plates when the appliance has cooled down.

Positioning the grease tray

During cooking, the grease tray must be inserted in its housing on the back of the appliance. The grease coming from the food is drained towards the hole in the plate and gathered in the tray.

i Please note: During cooking, check the grease tray frequently and pull out to avoid excess liquid grease.

After cooking, dispose of the grease collected appropriately. The grease tray is dishwasher safe.

⚠ Important! Pay attention during cooking.

To open the appliance, hold the handgrip which remains cold. The die-cast aluminum parts become very hot, avoid touching them during and immediately after cooking.

Before performing any operation on the appliance, leave to cool down for at least 30 minutes.

Cook only with the grease tray in place. Do not empty the grease tray until the appliance is completely cool. Take care when pulling out the grease tray in order to avoid spilling the liquid.

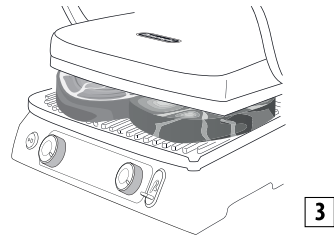
COOKING POSITIONS

Contact grill (closed position)

The upper plate rests on the lower plate. This is the starting position and also one of the cooking positions when the appliance is used as a contact grill. The cover automatically adjusts to the thickness of the food on the plate.

The food will thus be cooked evenly on both sides.

The contact grill is ideal for cooking hamburgers, deboned meat and thin meat slices, vegetables and sandwiches. The "contact" function is perfect to prepare food rapidly and healthily. When you use the contact grill, the food cooks quickly as it is in contact with the plates on both sides at once (see figure 3).

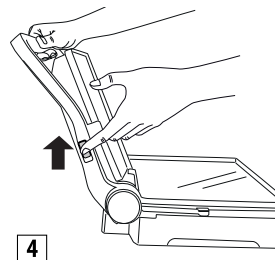


The grease from the food is drained and collected by the grooves on the plate and the hole at the back and is collected in the grease tray.

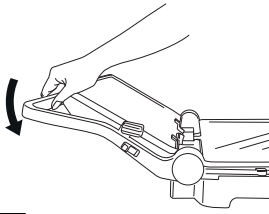
The appliance has a special handgrip and hinge allowing the upper plate to be adjusted according to the thickness of the food. If you want to cook a number of different types of food simultaneously using the contact grill, the various foods should have the same thickness to allow the cover to be closed evenly.

Open Grill

The upper plate is level with the lower plate. The lower and upper plates are both at the same level, forming a large cooking surface. In this position, the appliance can be used in barbecue mode with either the grill plate or the griddle plate. To place the appliance in this position, first identify the hinge release lever on the left. Hold the handgrip with the right hand and with the left, slide the release lever upwards (see figure 4).

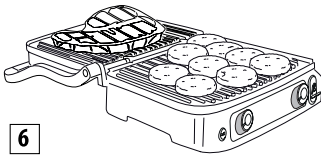


Push the handgrip backwards until the cover rests upside down in the flat position (see figure 5).



5

Lifting the handgrip slightly before pulling the release lever lightens pressure on the hinge and facilitates the operation. The appliance can be used as a grill/barbecue to prepare hamburgers, steak, chicken and fish. The grill/barbecue mode is the most versatile. The grill plates are in the open position, doubling the cooking surface (see figure 6).

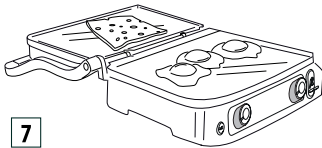


6

You can prepare a number of different foods on the separate plates without mixing the flavors, or cook more of the same food.

The grill/barbecue position can be used to grill cuts of meat with different thicknesses, each with the preferred level of cooking. In this position, you need to turn the food during cooking.

The appliance can also be used as a griddle/barbecue plate to prepare pancakes, eggs, cheese, fritters and bacon and sausages for breakfast (see figure 7).



7

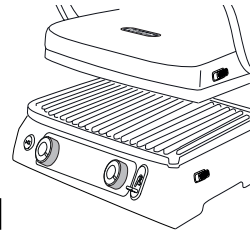
The large cooking surface enables a number of different foods to be prepared simultaneously, or to cook more of the same food.

Oven Grill

This position (see figure 8) is suitable for grilling without contact thick foodstuffs that need to be roasted slowly and uniformly. It is ideal for preparing vegetables with high water content, so the water can evaporate.

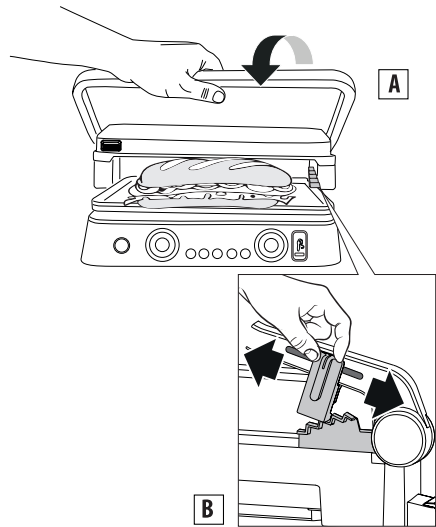
You can also use this hot plate position to prepare soft

sandwiches and foods which do not require pressing.



8

- Place the food on the lower plate.
- Bring the upper plate near the food, holding the handle (fig. A).
- Put the grill plates lock/release and height adjustment lever (4) to desired oven position by sliding the lever.
- The upper plate is locked in position. There are 5 positions of height regulation (fig. B).



USE

MANUAL mode

When the appliance has been prepared correctly and you are ready to cook, you can set a temperature from 60°C to 240°C for each grill plate (upper and lower) independently (using the thermostat dials 9 and 16). Press the start/stop button and the ON light will come on. The appliance takes some minutes to heat up depending on the set temperature. When the thermostat reaches the required temperature, the appliance emits 3 beep, and is ready to use. "READY" appears on the display. The temperature can be changed at any time during cooking.

TIMER function

When "READY" appears on the display, select the cooking position (see the section "Cooking Position"), then place the food on the plates. The cooking time can be selected by pressing the timer/ temperature probe buttons (14 and 15); at the end of the cooking time "END" is displayed, the appliance emits 5 beeps, **but the appliance remains on.** When the food is cooked, switch the appliance off by pressing the start/stop button (8) or turn the thermostat dials (9 and 16) to the "●" position.

i Please note: the appliance will turn off automatically after 90 minutes of operation.

SEAR function

This feature heats the upper and/or lower plates to a higher temperature for a few minutes. It is ideal for quickly searing foods at the beginning of cooking (ideal for thick meat). Press the start/stop button, then preheat the plates by pressing the sear buttons (10 and 17).

During the preheating, the LEDs around the sear button blink. Once the plate reaches the required temperature, the appliance emits a beep, the LED stays on and fixed for one minute.

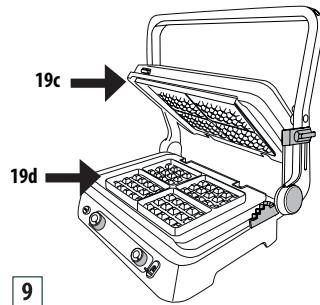
Put the food on the plates immediately; during this one minute, the appliance regulates the plate at the sear temperature. After that, the LED turns off, the display shows the temperature set by the thermostat dials and the appliance regulates the plate accordingly.

i Please note: This function can be used once only in every 30 minutes. After the cycle, if you press the sear function within 30 minutes, the LED around the sear button blink 5 times and the appliance will play 3 beeps. The operation cannot be set on the control.

WAFFLE mode (some models only)

- Insert the waffle plates (19c/19d) as show in fig.1. Please note that in this case the plates are not interchangeable and the position of each plate must be as shown in figure 9.
- Once the lower plate is inserted in the appliance, OFF-1-2 or 3 appears on the display (depends on the position of the knobs). Turn the thermostat dials to the desired position (1= light, 2= medium, 3= dark) and press the start/stop button.
- The appliance starts the preheating phase. When the thermostat reaches the required temperature, the appliance emits a beep, and is ready to use. "READY"

appears on the display.



- Lightly grease the plates with melted butter
- **Add one dosing cup for two waffle areas.**
- Spread the batter slightly and close the appliance.
- Cook according to the time indicated in the recipes. If you set the timer, three beeps will sound at the end of the cooking cycle, the timer will disappear and "END" will appear on the display; the appliance remains on. At the end of the last waffle press the "start/stop" button to switch off the appliance.
- To cook additional waffles, simply add batter to the lower waffle plate and follow the above steps.

! Important! do not use metal tools when removing the waffle from the waffle plates as they may scratch the non-stick surface.

i Please note: This function has been optimized with the appliance working in CLOSED position.

SANDWICH function

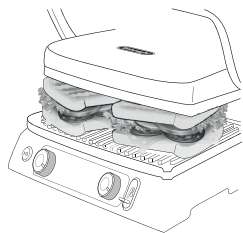
This function is ideal for toasting bread on the outside and heating the inside of the sandwich.

Press the SANDWICH button (11), the function LED lights up and the default time (05:00) appears on the display. The time can be changed at any time simply pressing buttons - (14) + (15); the temperature is already set, it cannot be changed because knobs are deactivated.

Press the START / STOP button and the ON light will come on (the time on the display will start flashing). The appliance starts the preheating phase.

When the thermostat reaches the temperature, the appliance emits 3 beep, and is ready to use. "READY" appears on the display. Place the sandwich on the lower plate as shown in figure 10, close with the upper one and press the SANDWICH button to start the countdown. At the end of cooking five beeps will sound and "--:--" will appear on the display. At the

end of the last sandwich press START / STOP button to switch off the appliance.



10

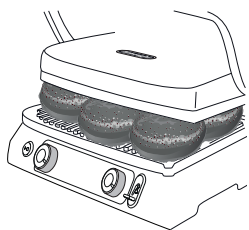
! **Important!** do not use metal tools when removing the sandwich as they may scratch the non-stick surface.

i **Please note:** starting from ready situation, if you do not press the sandwich button for the second time within 60 minutes, the appliance turn off. This function has been optimized with the appliance working in CLOSED position.

HAMBURGER function

This function is ideal for cooking hamburger. Press the HAMBURGER button (12), the function LED lights up and the default time (08:00) appears on the display. The time can be changed any time simply pressing buttons - (14) + (15); the temperature is already set, it cannot be changed because knobs are deactivated. Press the START / STOP button and the ON light will come on (the time on the display will start flashing). The appliance starts the preheating phase.

When the thermostat reaches the temperature, the appliance emits 3 beep, and is ready to use. "READY" appears on the display. Place the hamburger on the lower plate as shown in figure 11, close with the upper one and press the HAMBURGER button to start the countdown.



11

At the end of cooking, five beeps will sound and "--:--" will appear on the display. At the end of the last hamburger press START / STOP button to switch off the appliance.

! **Important!** do not use metal tools when removing the hamburger as they may scratch the non-stick surface.

i **Please note:** starting from ready situation, if you do not press the hamburger button for the second time within 60 minutes, the appliance turn off. This function has been optimized with the appliance working in CLOSED position.

KEEP WARM function

This function is ideal for keeping food warm at the end of cooking, before serving on the table. Press the KEEP WARM icon (13), the function LED lights up.

Once the function is activated, the temperatures of the plates will change automatically from previous setting to 60 °C; since the plates do not cool down immediately, we recommend cooking the food a few minutes less (it will finish cooking during the keep warm).

We do not recommend using this function for foods such as fillets and steaks because if they remain hot for long time they will tend to boil. Very suitable for fatty foods such as sausages, ribs or poultry, hamburgers, vegetables, polenta and some types of fish.

- **If cooking time has not been set**, by pressing the KEEP WARM button (13) the function will start immediately (the time will appear on the display and 6 bars will flash instead of the temperatures).
- **If the cooking time was set** and press the KEEP WARM button (13), at the end of the set time the appliance will automatically switch to keep warm function.

To switch off the appliance, press Start/Stop button or, only in case of manual mode, set the 2 knobs in "●" position.

It is not possible to switch from the KEEP WARM function to cooking. Always first reset the function by switching off the appliance. The KEEP WARM function will automatically turn off after **60 minutes** of use.

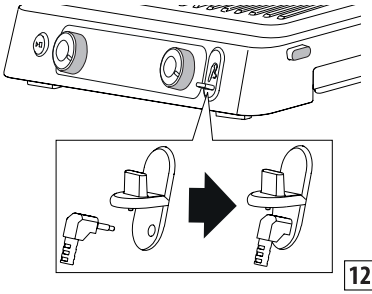
If you connect the probe and you select the KEEP WARM function before pressing the Start/Stop button, when the food temperature reaches the required temperature the appliance will automatically switch to KEEP WARM function.

! **Important!** if use the keep warm function with hamburger or sandwich functions, both plates will remain on even if the knobs are in "●" position.

If use the keep warm function while cooking in manual mode (contact grill, oven grill, open grill), only the plates in operation will be on (if a knob is "●" during cooking, that plate will remain OFF even in the keep warm function).

TEMPERATURE PROBE

This accessory is ideal for controlling the internal temperature of the food so it can be cooked at the desired temperature. Insert the probe (22) in its connector (18) as shown in figure 12, the display will automatically switch from timer mode to temperature of the probe as shown in figure 13.

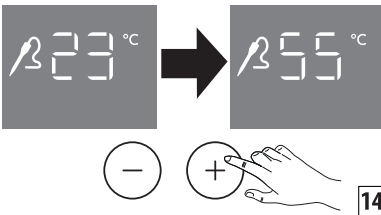


12



13

The probe can be used in two different ways; the first simply to check the temperature of the food whenever you want. Check the temperature of the food by inserting and then removing the probe from the food. The second option is to leave it directly inside the food during cooking; in this case you can set the target temperature by pressing the timer/temperature probe buttons - (14) + (15) as shown in figure 14.



14

Once the set temperature has been reached, the appliance will emit 3 beeps (we always recommend checking the food in several points before removing from the cooking plate to be sure you have inserted the probe in the center of the food). The appliance will remain on. If a cooking time is set and then the probe is inserted, the numbers on the display are always those of the temperature of probe and it will be not possible to see the previous time set (to do this, remove the probe).

In this case, having set 2 controls (timer and target temperature), the appliance will continue to count down the time, at the end will emit 5 beeps while upon reaching the target temperature it will emit 3 beeps. In both cases the appliance will remain on. If I use the probe in the HAMBURGER function, the default target temperature is 80 °C; you can change it by pressing the timer/temperature probe buttons - (14) + (15). The time in the automatic functions is always set even if it is not seen when the probe is inserted.

If use the probe in the sandwich function, the probe can only monitor the temperature and there is not a target temperature. The time in the automatic functions is always set even if it is not seen when the probe is inserted.

! Important! the tip is pointed, be careful to handle it. Keep out of reach of children.

! Danger of burns!! temperature probe can only be used to measure the temperature of the food. When inserting in the food, be careful not to touch the heating parts!

i Please note: the probe can't be washed in the dishwasher or immersed in water, you are therefore recommended to clean the outside of the probe with a soft sponge or cloth dampened with water and mild detergent.

RECOMMENDED TEMPERATURES		
BEEF		
fillet/ steak	(rare)	52°C
	(medium)	58°C
	(well done)	65°C
ribs		93°C
hamburger		72°C
LAMB		
cutlet		65°C
PORK		
fillet	(medium)	65°C
	(well done)	72°C
chop		72°C
sausages		80°C
ribs		88°C
CHICKEN AND TURKEY		
breast		75°C
wings		80°C

FISH	
whole	63°C

CLEANING AND MAINTENANCE

User maintenance

- Never use metal cleaning tools which could scratch the non-stick plates. Use wood or heat-resistant plastic tools.
- Between cooking one food and the next, remove food residues through the grease drain hole and collect them in the grease tray, then clean with kitchen paper and move on to the next cooking operation.
- Before cleaning the appliance, always leave the appliance to cool down for at least 30 minutes.

Cleaning and care



Please note: Before cleaning the appliance, make sure it has cooled down completely.

At the end of cooking, turn the appliance OFF and unplug from the mains. Leave the appliance to cool down for at least 30 minutes. Empty the grease tray. The grease tray can be washed by hand or in the dishwasher.




Press the plate release buttons (3) to remove the plates from the appliance. Before touching them, make sure they have cooled down completely. The cooking plates are dishwasher safe although frequent washing in a dishwasher could reduce the properties of the coating. You are therefore recommended to clean the outside of the cooking plate with a soft sponge or cloth dampened with water and mild detergent. Do not use metal tools to clean the plates.


TECHNICAL CHARACTERISTICS

Supply voltage	220-240 V ~50-60Hz
Absorbed power:	- 2200W (Grill and Griddle) - 1800W (Waffle)

TROUBLESHOOTING

Error message on display	DESCRIPTION	PROBLEM	SOLUTION
	No temperature rise on one cooking plate.	<p>The electronic control has detected that one cooking plate has not reached the target temperature.</p> <p>The grill plate is not correctly inserted in the appliance.</p> <p>The heating element inside the grill plate may be damaged.</p> <p>The heating element connection may be damaged.</p> <p>The electronic control may be damaged.</p>	<p>Unplug from wall outlet.</p> <p>Verify that the grill plate is correctly inserted in the appliance housing.</p> <p>If this does not resolve the problem, the appliance has probably malfunctioned.</p> <p>Contact De'Longhi Customer Service reporting the error type.</p>

	<p>Heating element ON time exceeded.</p>	<p>The electronic control has detected that the heating element was ON for an excessive length of time.</p>	<p>Unplug from wall outlet. Do not place oversized food or frozen food on the grill plates as this could overwork the heating elements. The control displays the error message and the appliance turns off. Let the appliance cool down before performing a new cooking cycle.</p>
	<p>Temperature probe malfunction.</p>	<p>The electronic control has detected a temperature probe malfunction.</p>	<p>Unplug from wall outlet. The temperature probe needs to be replaced. Contact De'Longhi Customer Service reporting the error type.</p>
	<p>Temperature probe malfunction.</p>	<p>The electronic control has detected a temperature probe malfunction.</p>	<p>Note the error word. Unplug from wall outlet. The temperature probe needs to be replaced. Contact De'Longhi Customer Service reporting the error type.</p>
		<p>The appliance does not come on.</p>	<p>Check the appliance is correctly plugged into the wall outlet. Plug the appliance into a different outlet. Verify the circuit breaker. If this does not resolve the problem, the appliance has probably malfunctioned. Contact De'Longhi Customer Service.</p>

		The appliance does not come on after pressing the START/STOP button.	Both temperature knobs are in the "●" position and the upper and lower display show OFF. Turn the temperature knob to the desired temperature, then press START/STOP.
		When the sear buttons are pressed, "SEAR" flashes on the display then the sear function goes off.	The sear function is available once in every 30 minutes of the cooking cycle. If you try to perform a second sear cycle before 30 minutes have elapsed, the operation will be refused. Wait 30 minutes before starting a new sear cycle.
	Thermoprobe error	The thermoprobe is too hot or the electronic control has detected a temperature probe malfunction	Unplug the thermoprobe and cool it before plugging again. If the ERR word still appear the thermoprobe needs to be replaced. Contact De'Longhi Customer Service.
		The display does not switch from timer mode to temperature of the probe when the connector is inserted in the appliance	Temperature probe or connector needs to be replaced. Contact De'Longhi Customer Service.

COOKING TABLE

NOTE FOR MODEL CGH1112DP: If you have this model (which has only one grill plate and one griddle plate) in the plate column, the type of plate is intended to be placed in the lower part, the other in the upper one.

BEEF	THICKNESS (cm)	No. PIECES	COOKING LEVEL	PLATE MODE	PLATES	°C	SEAR	MIN.	TIPS
Steak	0,5 - 1	2	Well done	CONTACT GRILL	grill	240	√	2 - 3	oil the food well
Steak	0,5 - 1	4	Well done	OPEN GRILL	grill	240		5 - 6	oil the food well, turn half-way through cooking
Fillet	3-4	4	Rare	CONTACT GRILL	grill	240	√	4 - 5	oil the food well
Fillet	3-4	4	Medium	CONTACT GRILL	grill	240	√	7 - 8	oil the food well
Fillet	3-4	4	Well done	CONTACT GRILL	grill	240	√	10 - 11	oil the food well
Rib steak	2-3	2	Medium	CONTACT GRILL	grill	240		4 - 5	oil the food well
Rib steak	2-3	2	Well done	CONTACT GRILL	grill	240		7 - 8	oil the food well
Rib steak	2-3	4	Medium	OPEN GRILL	grill	240		10 - 12	oil the food well, turn half-way through cooking
Rib steak	2-3	4	Well done	OPEN GRILL	grill	240		14 - 16	oil the food well, turn half-way through cooking
Kebab		6	Well done	CONTACT GRILL	grill	240		13 - 15	oil the food well, turn half-way through cooking

LAMB	THICKNESS (cm)	No. PIECES	COOKING LEVEL	PLATE MODE	PLATES	°C	MIN.	TIPS
Cutlet	1.5-3	6	Medium	CONTACT GRILL	grill	240	10 - 12	oil the food well, turn the cutlets half-way through cooking
Cutlet	1.5-3	6	Well done	CONTACT GRILL	grill	240	12 - 14	

PORK	THICKNESS (cm)	No. PIECES	PLATE MODE	PLATES	°C	SEAR	MIN.	TIPS
Steak	1-2	4	CONTACT GRILL	grill	240	√	7 - 9	oil the food well
Steak	1-2	8	OPEN GRILL	grill	240		14 - 16	oil the food well, turn halfway through cooking
Chop	<2,5	4	CONTACT GRILL	grill	240		9 - 11	oil the food well, turn halfway through cooking
Chop	<2,5	8	OPEN GRILL	grill	240		11 - 13	oil the food well, turn halfway through cooking
Spare rib		6-8	CONTACT GRILL	grill	200		20 - 25	turn two or three times
Bacon		4	CONTACT GRILL	grill	240		1 - 2	
Sausage		8	CONTACT GRILL	grill	200		16 - 18	Pierce the sausages with a fork
Kebab		6	CONTACT GRILL	grill	240		14 - 16	oil the food well, turn once or twice
Frankfurter		6	CONTACT GRILL	grill	240		8 - 10	

CHICKEN AND TURKEY	THICKNESS (cm)	No. PIECES	PLATE MODE	PLATES	°C	SEAR	MIN.	TIPS
Breast	<1	4	CONTACT GRILL	grill	240	√	3 - 4	oil the food well
Haunch		3	CONTACT GRILL	grill	200		20 - 25	turn once or twice during cooking
Wing		6	CONTACT GRILL	grill	200		14 - 16	turn once or twice during cooking
Kebab		6	CONTACT GRILL	grill	240		11 - 13	turn once or twice during cooking
Frankfurter		6	CONTACT GRILL	grill	240		6 - 8	
Flat grilled chicken		1	CONTACT GRILL	grill	200		40 - 45	turn once or twice during cooking

BREAD	No. PIECES	PLATE MODE	PLATES	°C	MIN.	TIPS
Roll	2	CONTACT GRILL	grill	240	2 - 3	
Slices of bread	4	OPEN GRILL	griddle	240	4 - 5	turn halfway through cooking

VEGETABLES	No. PIECES	PLATE MODE	PLATES	°C	MIN.	TIPS
Sliced eggplant	1	CONTACT GRILL	grill	240	4 - 6	oil the food well
Sliced zucchini	2	CONTACT GRILL	grill	240	6 - 8	oil the food well
Quartered sweet pepper	2	CONTACT GRILL	grill	240	8 - 10	oil the food well
Sliced tomato	1	OPEN GRILL	griddle	240	5 - 7	oil the food well, turn halfway through cooking
Sliced onion	2	CONTACT GRILL	griddle	240	5 - 7	oil the food well, mix often with a spatula

FISH	QUANTITY	No. PIECES	PLATE MODE	PLATES	°C	MIN.	TIPS
Whole	250 g	1	CONTACT GRILL	grill	200	8 - 10	oil the food well
Fillet	500 g	1	OVEN GRILL	grill	240	25 - 30	oil the food, position the top plate so that it just brushes the food without touching it
slice	450 g	4	CONTACT GRILL	grill	200	8 - 10	oil the food well
Kebab	500 g	6	OPEN GRILL	grill	240	10 - 12	oil the food well; turn two or three times
Squid	400 g	1-2	CONTACT GRILL	grill	200	10 - 12	oil the food well
Prawns	400 g	10-12	CONTACT GRILL	grill	200	4 - 6	oil the food well

DESSERTS	No. PIECES	PLATE MODE	PLATES	°C	MIN.	TIPS
Pancakes	4	OPEN GRILL	griddle	200	4 - 5	butter the plates, turn halfway through cooking
Waffles	4	CONTACT GRILL	WAFFLES	1 - 2 - 3	4 - 5	butter the plates
Sliced pineapple	4	CONTACT GRILL	grill	200	5 - 6	butter the plates

RECIPES

EGG SCRAMBLE, BACON AND TOAST

INGREDIENTS:

- eggs 2
- bacon 2 slices
- milk 10 ml
- salt and pepper to taste
- bread for toast 2 slices

PREPARATION:

Beat the eggs with the milk and salt until it forms a light frothy mixture. Insert the griddle plate at the lower and the grill one at the upper and position the grill in OPEN GRILL mode. Adjust the lower thermostat dial to 240°C and the upper dial to 240°C. Press the START/STOP button to preheat the grill. When READY is displayed, pour the egg mix onto a corner of the plate and cook for 2-3 min., mixing well with a wooden spatula to ensure it cooks evenly. In the meantime, on the same plate, cook the bacon slices for 3-4 min., turning about halfway through cooking; on the other griddle plate, toast the bread for 3-4 min., turning about halfway through cooking. Compose the dish and serve.

CROUTONS AND EGGPLANT CREAM

INGREDIENTS:

- eggplant 1
- ricotta 100 g
- powdered garlic to taste
- parsley to taste
- olive oil 40 ml
- salt to taste
- pepper to taste
- baguette 1

PREPARATION:

Wash the eggplants well, peel and cut into thick slices. Insert the griddle plate at the lower and the grill one at the upper and position the grill in CONTACT GRILL mode. Adjust the lower thermostat dial to 240°C and the upper dial to 240°C. Press the START/STOP button to preheat the grill. When READY is displayed, place the eggplants on the lower grill and cook for about 8-10 min. until soft. Cut the eggplant slices coarsely and place in a mixer with the ricotta, garlic, chopped parsley, pinch of salt, pinch of pepper and oil. Mix to obtain a smooth fine mixture. Cut the bread into slices and oil with the olive oil, then cook at 240°C in CONTACT GRILL mode for 1-2 minutes until they are browned to taste. Spread the eggplant cream onto the toasted bread, sprinkle with two dessert spoons of oil and serve.

MEAT, ARUGULA AND CHERRY TOMATO SALAD

INGREDIENTS:

- veal slices 2
- arugula 100 g
- cherry tomatoes 10-12
- grana cheese flakes 100 g
- salt to taste
- olive oil to taste

PREPARATION:

Prepare the arugula and cherry tomato salad: wash the arugula, place on a clean cloth to dry and cut the cherry tomatoes into four. Insert the grill plate at the lower and the griddle one at the upper and position the grill in CONTACT GRILL mode. Adjust the lower thermostat dial to 240°C and the upper dial to 240°C. Press the START/STOP button to preheat the grill. When READY is displayed, position the previously oiled veal slices, press with the upper plate and cook for 2-3 min. to taste. Cut the meat into strips and arrange them on the bed of arugula and cherry tomatoes, salt to taste and add the flakes of grana cheese. Flavour with a little oil.

COFFEE FLAVOURED RIB STEAKS

INGREDIENTS:

- rib steaks (2 x 250 g each)
- olive oil

FOR THE COFFEE MIXTURE:

- cumin seeds 2 tsp
- coffee beans 2 tsp
- sweet chilli pepper 2 tsp
- paprika 1 tsp
- coarse salt 1 tsp
- pepper 1 tsp

PREPARATION:

Prepare the coffee mixture: pour the cumin seeds and coffee into a food processor and grind into a powder (not too fine). Pour the powder into a bowl, add the other ingredients and mix well. Oil the meat lightly and flavour with the spices, cover and leave at room temperature for about 30 min. Insert the grill plate at the lower and the griddle one at the upper and position the grill in CONTACT GRILL mode. Adjust the lower thermostat dial to 240°C and the upper dial to 240°C. Press the START/STOP button to preheat the grill and the SEAR button for both plates. When SEAR stops flashing on the display, place the meat on the lower plate, press with the upper plate and cook for 6-8 min. to taste. Serve hot.

BEEF FILLET WITH MUSHROOM SAUCE

INGREDIENTS:

- beef fillets 4
- salt to taste
- black peppercorns for grinding to taste
- garlic cloves 2
- Dijon mustard 20 ml
- butter 60 g
- olive oil to taste

INGREDIENTS FOR THE MUSHROOM SAUCE:

- butter 30 g
- gorgonzola 2 tsp
- shallots 2
- mushrooms 300 g
- whisky 1/2 small glass
- cream 200 g
- lemon juice to taste
- parsley to taste

PREPARATION:

Flavour the meat with the salt and pepper and leave at room temperature for about an hour.

Prepare the mushroom sauce: melt the butter in a pan, add the sliced shallots and cook for 2-3 min. Add the mushrooms and cook for a further 5 min. Add the whisky, cook for 1 min., add a glass of water and cook for about a minute more. Add the liquid cream, lemon juice, parsley and gorgonzola and bring to the boil.

Cook until the sauce thickens, adjust the salt and pepper and set aside.

In the meantime, prepare the flavouring to be brushed on the fillet during cooking: in a small pan, melt the butter, mustard and garlic. Cook over a low heat until the butter melts. Keep warm.

Insert the grill plate at the lower and the griddle one at the upper and position the grill in CONTACT GRILL mode. Adjust the lower thermostat dial to 240°C and the upper dial to 240°C.

Press the START/STOP button to preheat the grill and the SEAR button for both plates.

Brush the fillets with the flavouring on both sides, then when SEAR stops flashing on the display, place them on the lower plate and close the grill. Cook for 6-8 min. according to taste and the thickness of the fillets. When cooked, remove the fillets and serve covered with the mushroom sauce prepared previously.

HAMBURGER WITH TOASTED RYE BREAD

INGREDIENTS:

- rye bread 8 slices
- top quality beef mince 500 g
- sliced Emmenthal 100 g
- olive oil 20 ml
- sliced onions 2
- butter at room temperature as required
- Worcester sauce 2 tsp
- salt to taste
- pepper to taste
- sugar half a tsp

PREPARATION:

Prepare the hamburgers: mix the mince, Worcester sauce, salt and pepper thoroughly in a bowl. By hand, shape 4 hamburgers about 2 cm thick. Position the grill in OPEN GRILL mode and insert the griddle plate at the lower and the grill plate at the top. Adjust the lower thermostat dial to 240°C and the upper dial to 240°C.

Press the START/STOP button to preheat the grill.

When READY is displayed, place the sliced onions flavoured with the olive oil and sugar on the lower plate and cook for about 5-6 min., mixing well with a spatula to ensure they cook evenly and are tender. At the same time, on the other plate, cook the hamburgers for about 12 min., turning after about 5-6 min. (the cooking time varies according to the thickness of the hamburger). As soon as the onions are cooked, remove from the plate and toast the buttered slices of bread on one side only for 1-2 min.

Place the slices of bread on a chopping board with the toasted side upwards, sprinkle with the onions, add the hamburgers and cover with the cheese. Close the sandwich with the slice of bread with the toasted side facing downwards, press the sandwich button; when ready is displayed insert the sandwiches and press well with the upper plate.

Cook for about 2-3 min. to taste.

LAMB CUTLETS WITH BALSAM VINEGAR AND ROSEMARY

INGREDIENTS:

- lamb cutlets 6
- chopped rosemary 10 g
- chopped garlic 10 g
- balsam vinegar 100 ml
- sugar 15 g
- salt to taste
- pepper to taste

PREPARATION:

Mix all the ingredients well in a sufficiently large recipient, cover and leave the lamb to marinate in the refrigerator for at least 1-2 hours. Insert the grill plate at the lower and the griddle one at the upper and position the grill in CONTACT GRILL mode. Adjust the lower thermostat dial to 240°C and the upper dial to 240°C. Press the START/STOP button to preheat the grill. When READY is displayed, place the cutlets on the lower plate. Cook for about 11-13 min. according to taste and the thickness of the cutlets (you are recommended to turn them halfway through cooking as the bone prevents the upper plate from touching the meat on the top). In the meantime, reduce the marinade in a pan and serve as a sauce on the grilled lamb cutlets.

CHICKEN KEBABS WITH HONEY AND LIME CREAM

INGREDIENTS:

- chicken breast 500 g

INGREDIENTS FOR THE MARINADE:

- chilli pepper 1 tsp
- coriander 1 tsp
- olive oil 10 cl
- spring onions 2
- garlic cloves 3
- grated ginger 2 tsp
- sugar 2 tsp
- lime juice 10 ml
- coarse salt 2 tsp
- pepper to taste

INGREDIENTS FOR THE HONEY AND LIME CREAM:

- cooking cream 5 cl
- grated lime peel 1/2 tsp
- lime juice 10 ml
- olive oil 10 ml
- honey 10 ml
- salt to taste

PREPARATION:

Prepare the marinade: place all ingredients in a food processor and blend to obtain a smooth mixture. Place the chicken cut into 2 cm wide cubes on a deep plate, add the marinade and cover all the chicken evenly. Cover with food film and marinate for 1-2 hours.

Prepare the cream by mixing all the ingredients in a bowl, cover with transparent film and keep in the refrigerator. Thread the chicken pieces onto the kebab skewers. Insert the grill plate at the lower and the griddle one at the upper and position the grill in CONTACT GRILL mode. Adjust the lower thermostat dial to 240°C and the upper dial to 240°C. Press the START/STOP button to preheat the grill. When READY is displayed, place the kebabs on the lower plate, press with the upper plate and cook for about 11-13 min., turning once or twice. Serve hot accompanied with the lime and honey cream.

PROVENCE STYLE CHICKEN LEGS

INGREDIENTS:

- chicken legs 3 (550 g)

INGREDIENTS FOR THE MARINADE:

- dry white wine 25 cl
- olive oil 40 ml
- mustard with seeds 30 ml
- white wine vinegar 30 ml
- Provence herbs 4 tsp
- chopped garlic 2 cloves
- coarse salt 2 tsp
- Cayenne pepper 1 tsp

PREPARATION:

Prepare the marinade by mixing all the ingredients in a bowl. With a sharp knife, cut the fleshy part of the chicken legs at a number of points to open them slightly. Place the legs in the bowl with the marinade and turn them so that both sides are well covered; leave to marinate for 2-3 hours. Insert the grill plate at the lower and the griddle one at the upper and position the grill in CONTACT GRILL mode. Adjust the lower thermostat dial to 210°C and the upper dial to 210°C. Press the START/STOP button to preheat the grill. When READY is displayed, place the chicken legs on the lower plate, press with the upper plate and cook for about 20-25 min., turning 2-3 times. When cooked, place on a plate and serve.

GRILLED PRAWNS

INGREDIENTS:

- prawns 16/20

INGREDIENTS FOR THE MARINADE:

- parsley to taste
- lemons 2
- salt to taste
- pepper to taste
- garlic cloves 2

PREPARATION:

Prepare the marinade: chop the garlic and parsley finely, add the lemon juice, salt and a sprinkling of pepper.

Wash the prawns, dry well and leave to marinate for at least half an hour. Insert the grill plate at the lower and the griddle one at the upper and position the grill in CONTACT GRILL mode. Adjust the lower thermostat dial to 210°C and the upper dial to 210°C. Press the START/STOP button to preheat the grill.

When READY is displayed, place the drained prawns on the lower plate, press with the upper plate and cook for about 4-6 min. To serve, decorate the plate with lemon slices and green salad.

GRILLED SALMON WITH YOGHURT SAUCE

INGREDIENTS:

- salmon fillet 500 g
- olive oil to taste

INGREDIENTS FOR THE SAUCE:

- Greek yoghurt 250 g
- garlic clove 1
- salt 1 tsp
- sugar 1 pinch
- chives 20 g
- parsley 20 g
- white pepper to taste

PREPARATION:

Prepare the sauce: wash the parsley and chives and dry thoroughly, chop the garlic separately.

Pour the yoghurt into a bowl, add the herbs, garlic, salt, sugar and pepper and blend to a smooth cream. Place in the refrigerator and leave for at least 30 min.

Insert the griddle plate at the lower and the grill one at the upper and position the grill in OVEN GRILL mode. Adjust the lower thermostat dial to 240°C and the upper dial to 240°C. Press the START/STOP button to preheat the grill.

When READY is displayed, place the previously oiled fillet on the lower plate, close the upper plate in OVEN GRILL mode (as near as possible to the food without touching it) and cook for about 25-30 min. (for best results, turn the salmon through 180° about halfway through cooking as towards the back, the plate is nearer the food).

When cooked, place the salmon on a serving plate and serve with the yoghurt sauce.

GRILLED SQUID

INGREDIENTS:

- large squid 400 g
- lemon 1
- parsley 1 sprig
- olive oil to taste
- oregano to taste
- salt to taste
- chilli pepper powder to taste

PREPARATION:

Prepare the squid by removing the intestines, head and bone, then rinse thoroughly.

Insert the grill plate at the lower and the griddle one at the upper and position the grill in CONTACT GRILL mode. Adjust the lower thermostat dial to 210°C and the upper dial to 210°C. Press the START/STOP button to preheat the grill. When READY is displayed, place the previously oiled squid on the lower plate, press with the upper plate and cook for about 10-12 min. In a bowl, prepare the flavouring by mixing the oil with the chopped parsley, lemon juice, a pinch of oregano, a pinch of salt and a pinch of chilli pepper.

When the squid is cooked, remove from the grill and flavour with the sauce. Compose the dish and serve.

BANANA PANCAKES

INGREDIENTS:

- banana 1
- eggs 2 (1 whole + 1 white)
- milk 150 ml
- plain flour 100 g
- butter 70 g
- salt to taste
- sugar 2 tsp
- baking powder 16 g

PREPARATION:

Peel the banana and mash well with a fork. Beat the whole egg and sugar in a bowl and add the milk slowly mixing all the time. Add 50 g of melted butter, then add the flour sieved

with the baking powder and a pinch of salt a little at a time, followed by the mashed banana. Mix all the ingredients thoroughly and then place the mixture in the refrigerator for 10 min.

In the meantime, whip the egg white until firm.

Take the mixture from the refrigerator and blend in the whipped egg white with delicate movements from the lower towards the top. Insert the griddle plate at the lower and the grill one at the upper and position the grill in OPEN GRILL mode. Set the lower thermostat dial to 200°C and the upper dial to 200°C. Press the START/STOP button to preheat the grill. When READY is displayed, grease the plates with a little butter and pour on 1-2 dessert spoons of the pancake mixture, spreading it rapidly over the surface to obtain a circle. Leave to cook for about 2 minutes until you see bubbles all over the surface of the pancake, then turn and cook the other side for about 2 minutes. The pancakes can be served in numerous ways: chocolate cream, maple syrup, fresh bilberries, chocolate chips, honey, whipped cream and icing sugar.

GRILLED PINEAPPLE WITH ICE-CREAM

INGREDIENTS:

- pineapple 1
- honey as required
- cane sugar as required
- fresh mint as required
- icing sugar as required
- vanilla ice-cream as required

PREPARATION:

Take the pineapple, remove the leaves and peel. Cut into slices about 1-2 cm thick and sprinkle each slice with cane sugar on both sides. Insert the grill plate at the lower and the griddle one at the upper and position the grill in CONTACT GRILL mode. Set the lower thermostat dial to 200°C and the upper dial to 200°C. Press the START/STOP button to preheat the grill. When READY is displayed, brush the pineapple on both sides with honey and place on the grill. Close the grill and cook for 5-6 min.

Once cooked, place the slices on a serving plate, decorate with fresh mint leaves, dust with icing sugar and serve with balls of ice-cream.

ONLY IF YOU HAVE THE WAFFLE PLATES

(available as a separate accessory)

CLASSIC WAFFLES

MAKES: 8-10 waffles

PREPARATION: 10min.

COOKING TIME: 15min.

INGREDIENTS:

- all purpose flour 315 g
- salt 4 g
- baking powder 5 g
- Baking soda 4 g
- eggs (whole) 100g
- milk 490 ml
- Vegetables oil 80 ml
- granulated sugar 30 g

PREPARATION:

Insert the waffle plates. Put all ingredients together in a bowl starting with the liquid ones. Beat 5 minutes until blended. Turn the thermostat dials to the desired position. Preheat the waffle iron.

When READY is displayed, coat the waffle iron with melted butter or non-stick cooking spray and pour on a dosing cup for two waffle areas, using a spoon if necessary. Spread with a spatula. Cook the waffles until golden and crisp (4-5 min.). Repeat until all the mixture is used.

Serve immediately.

BELGIAN WAFFLES

MAKES: 10-12 waffles

PREPARATION: 15 min.

COOKING TIME: 15 min.

INGREDIENTS:

- cake flour 460 g
- salt 1/2 tsp
- baking powder 5 g
- white sugar 30 g
- eggs 4
- warm milk 460 g
- melted butter 70 g
- vanilla extract 1/2 tsp

PREPARATION:

Insert the waffle plates. In a large bowl, mix the flour, salt and baking powder together; set aside. In a separate bowl, beat the egg yolks and sugar until the sugar is completely dissolved. Add the vanilla extract, melted butter and milk to

the eggs and whisk to combine.

Combine the egg-milk mixture with the flour mixture and whisk until just blended. Do not over mix. In a third bowl, beat the egg whites with an electric mixer until soft peaks form, about 1-2 minutes. Using the rubber spatula, gently fold the egg whites into the waffle batter. Do not over mix.

Turn the thermostat dial to the desired position. Preheat the waffle iron. When READY is displayed, coat the waffle iron with melted butter or non-stick cooking spray and pour on a dosing cup for two waffle areas, using a spoon if necessary. Spread with a spatula. Cook the waffles until golden and crisp (4-5 min.). Repeat until all the mixture is used.

Serve immediately.

CHOCOLATE AND CINNAMON WAFFLES

MAKES: 8 - 10 waffles

PREPARATION: 10min.

COOKING TIME: 15 min.

INGREDIENTS:

- plain flour 460 g
- salt 1 tsp
- baking powder 3 g
- white sugar 170 g
- eggs 2
- warm milk 1345 ml
- butter 80 g
- vanilla extract 1 tsp
- dark chocolate 140 g
- cocoa powder 60 g
- cinnamon 6 g

PREPARATION:

Insert the waffle plates. Place the chocolate and butter in a microwave safe bowl and beat on maximum power for 30 seconds. Stir and continue until the chocolate and butter have melted and the mixture is smooth, set aside to cool slightly.

Whisk eggs, milk and vanilla together in a large bowl and stir through the cooled chocolate mixture until smooth.

Sift the flour, sugar, cocoa powder, cinnamon, baking powder and salt together in a large bowl. Add the flour mixture to the egg mixture and whisk until mostly smooth with just a few lumps. Turn the thermostat dial to the desired position. Preheat the waffle iron.

When READY is displayed, coat the waffle iron with melted butter or non-stick cooking spray and pour on a dosing cup for two waffle areas, using a spoon if necessary. Spread with a spatula. Cook the waffles until golden and crisp (5 min.). Repeat until all the mixture is used. Serve immediately.