



INFINISSIMA  
TOUCH

USER MANUAL





## TABLE OF CONTENTS

1. SAFETY PRECAUTIONS.....	3
2. MACHINE OVERVIEW.....	5
3. KEY FEATURES.....	6
3.1 TOUCH INTERFACE .....	6
3.2 HOW TO START THE MACHINE .....	6
3.3 LIFT & CLICK DRIP TRAY .....	6
4. BEVERAGE EXAMPLES.....	7
5. RECOMMENDATIONS FOR SAFE USE.....	8
6. FIRST USE RINSING.....	9
7. PREPARING A BEVERAGE.....	10
7.1 ONE CAPSULE (E. G. LUNGO) .....	10
7.2 TWO CAPSULES (E. G. CAPPUCCINO) .....	11
8. CLEANING.....	13
9. DESCALING AT LEAST EVERY 3-4 MONTHS.....	14
10. TROUBLESHOOTING.....	16
10.1 ON / OFF ICON TURNED TO ORANGE COLOUR .....	16
10.2 NO LIQUID COMES OUT - NO WATER IN THE WATER TANK? .....	16
10.3 NO LIQUID COMES OUT - CAPSULE BLOCKED? .....	17
10.4 NO LIQUID COMES OUT - INJECTOR BLOCKED? .....	17
10.5 VARIOUS .....	18

# 1. SAFETY PRECAUTIONS

**Read all instructions and keep these safety instructions. Any type of misuse of the appliance may result in a potential injury.**

In case of any inappropriate use or failure to comply with the instructions, the manufacturer accepts no responsibility and the guarantee may not apply.

**The guarantee does not cover appliances that do not work or do not work properly because they have not been maintained and/or descaled.**

## INTENDED USE

1. This appliance is intended to be used in household only. It is not intended to be used in following applications, and the guarantee will not apply for:
  - staff kitchen areas in shops, offices and other working environments;
  - farm houses;
  - by clients in hotels, motels and other residential type environments;
  - bed and breakfast type environments;
2. Your appliance is intended for domestic use inside the home only at an altitude below 3400 m.

## ELECTRICAL POWER SUPPLY

3. Connect the appliance to a mains power socket with an earth connection only. Mains voltage must be the same as the details on the rating plate. The use of incorrect connection will negate the guarantee and may be hazardous.
4. To protect against fire, electric shock and injury to persons do not immerse the power cord, plugs or the appliance in water or other liquid. Avoid spillage on the plug. Never touch the power cord with wet hands. Do not overfill the water tank.
5. In case of an emergency remove the plug from the mains power socket immediately.
6. Unplug from the mains power socket when not in use.
7. To disconnect, remove the plug from the mains power socket. Do not unplug by pulling the cord.
8. Do not let the cord hang over the edge of a table or counter, or touch hot surfaces or sharp edges. Do not allow the cord to dangle (risk of tripping up). Never touch the cord with wet hands.
9. Do not operate any appliance with a damaged cord or plug. If the power cord is damaged, it must be replaced by the manufacturer, its service agent or similarly qualified persons in order to avoid a hazard. Do not operate any appliance that malfunctions or has been damaged in any manner. Unplug cord immediately. Return the damaged appliance to the nearest authorised service facility designated by the NESCAFÉ® Dolce Gusto® hotline.
10. If the mains power socket does not match the plug on the appliance, have the plug replaced with a suitable type by aftersales service centres designated by the NESCAFÉ® Dolce Gusto® hotline.

## CONDITIONS OF USE

11. Always use the appliance on a flat, stable, heat resistant surface away from sources of heat or water splashes.
12. Do not use the appliance without the drip tray and drip grid, except when a very tall mug is used. Do not use the appliance for hot water preparation.
13. Never turn the machine upside down.
14. The use of accessory attachments not recommended by the appliance manufacturer may result in fire, electric shock or injury to persons.
15. Do not place on or near a hot gas or electric burner, or in a heated oven.
16. Do not put fingers under the outlet during beverage preparation.
17. Do not touch the injector of the machine head.
18. Never carry the appliance by the extraction head.
19. The capsule holder is equipped with a permanent magnet. Avoid placing the capsule holder near appliances and objects that can be damaged by magnetism, e.g. credit cards, USB drives and other data devices, video tapes, television and computer monitors with picture tubes, mechanical clocks, hearing aids and loud speakers.
20. Do not turn off the appliance during the descaling process. Rinse the water tank and clean the appliance to avoid any residual descaling agent.
21. If away for prolonged periods, on holiday, etc. the appliance must be emptied, cleaned and unplugged. Rinse before reuse. Operate the rinse cycle before re-using your appliance.
22. We recommend using the NESCAFÉ® Dolce Gusto® capsules designed and tested for the NESCAFÉ® Dolce Gusto® machine. They were designed to interact together – the interaction provides the in-cup quality that NESCAFÉ® Dolce Gusto® is known for. Each capsule is designed to prepare a perfect cup, and cannot be reused.
23. Do not remove hot capsules by hand. Always use capsule holder handle to dispose of used capsules.
24. Always insert the capsule holder in the machine to prepare a beverage. The appliance will not work if the capsule holder is not inserted. Do not pull out the capsule holder before the indicator stops blinking.
25. Machines equipped with a locking handle: Scalding may occur if the locking handle is opened during the brewing cycles. Do not pull up the locking handle before the lights on the machine stop flashing.
26. For health reasons, always fill the water tank with fresh drinking water.
27. After use of the appliance always remove the capsule and clean the capsule holder. Empty and clean the drip tray and capsule bin daily. Food allergy sufferers must rinse the appliance according to cleaning procedure.

28. The heating element surface is subject to residual heat after use and plastic housings may feel warm to touch several minutes upon use.
29. Patients with pacemakers or defibrillators: Do not hold the capsule holder directly over the pacemaker or defibrillator.
30. The appliance shall not be placed in a cabinet when in use.

### CHILDREN

31. Keep the appliance and its cord out of reach of children aged less than 8 years. Children shall not play with the appliance.
32. This appliance can be used by children aged from 8 years and above and persons with reduced physical, sensory or mental capabilities or lack of experience and knowledge if they have been given supervision or instruction concerning use of the appliance in a safe way and if they understand the hazards involved.
33. This appliance is not intended for use by children or persons with reduced physical, sensory or mental capabilities, or lack of experience and knowledge, unless they have been given supervision or instruction concerning use of the appliance by a person responsible for their safety. Persons who have a limited or no understanding of the operation and use of this appliance must first read and fully understand the contents of the user manual, and where appropriate seek additional guidance on its operation and use from the person responsible for their safety.
34. Children should be supervised to ensure that they do not play with the appliance.
35. Cleaning and user maintenance shall not be made by children unless they are older than 8 and supervised by an adult.
36. Children should not use the appliance as a toy.

### MAINTENANCE

37. Unplug from the mains power socket before cleaning. Allow to cool before putting on or taking off parts, before cleaning the appliance. Never clean wet or immerse appliance in any fluid. Never clean the appliance with running water. Never use detergents to clean the appliance. Clean the appliance only using soft sponges/brushes. The water tank should be cleaned with a clean food-safe brush.
38. Do not dismantle appliance and do not put anything into openings. Any operation other than normal use, cleaning and care must be undertaken by after-sales service centres designated by the NESCAFÉ® Dolce Gusto® hotline.
39. To reduce the risk of fire or electric shock, do not remove the cover. No user serviceable parts inside. Repair should be done by authorized service personnel only!
40. For additional guidance on how to use the appliance, refer to the user manual on [www.dolce-gusto.com](http://www.dolce-gusto.com) or call the NESCAFÉ® Dolce Gusto® hotline number.

### RECYCLING

41. Packaging is made of recyclable materials. Contact your local council / authority for further information on recycling programs. Your appliance contains valuable materials which can be recovered or recycled.

### EUROPEAN MARKETS ONLY: Think of the environment!



Your appliance contains valuable materials which can be recovered or recycled.

Leave it at a local civic waste collection point or at an approved service centre, where it will be disposed of properly. European Directive 2012/19/EU on Waste Electrical and Electronic Equipment (WEEE), stipulates that used household appliances must not be disposed of in normal unsorted municipal waste. Old appliances must be collected separately to optimise the sorting and recycling of their parts and to reduce the impact on human health and the environment.



## 2. MACHINE OVERVIEW



1. Water tank
2. Water tank cover
3. Selection lever
  - 3.1 Cold
  - 3.2 STOP
  - 3.3 Hot
4. Locking handle with touch interface
5. Rinsing tool
6. Capsule holder
7. Power button / Descaling signal / Error signal
8. Injector
9. Cleaning needle
10. Drip tray
11. Drip grid

### ECONOMY MODE:

After 1 minute of non-usage.



Please be aware that the appliance is still using electricity whilst in eco-mode (0.3 Wh).

### TECHNICAL DATA

- GB / IE  
220–240 V, 50/60 Hz, 1340–1600 W
- max. 15 bar
- 1.2 L
- 2.65 kg
- 5–45 °C  
41–113 °F
- A = 15.50 cm  
B = 37.30 cm  
C = 28.55 cm



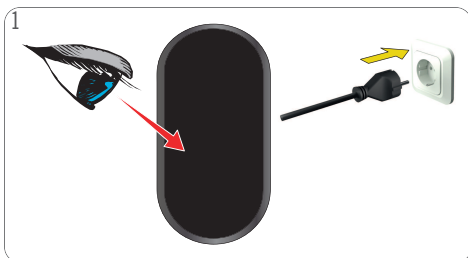
### 3. KEY FEATURES

#### 3.1 TOUCH INTERFACE

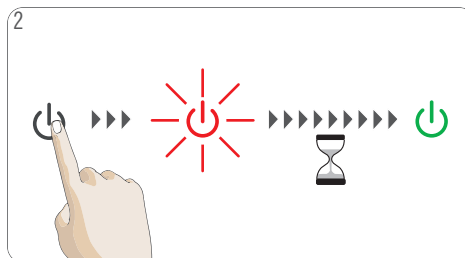


1. **XL function**  
Prepare coffees up to XL size (300 ml)
2. **Touch interface with volume selection (level bars)**  
Adjust the volume of your coffees by selecting short (1 level bar) to extra large (XL bars). During the preparation process the level bars go down progressively.

#### 3.2 HOW TO START THE MACHINE



1  
Ensure to use the correct mains voltage as given in 2. "MACHINE OVERVIEW" on page 5. Connect the power plug to the mains power socket.

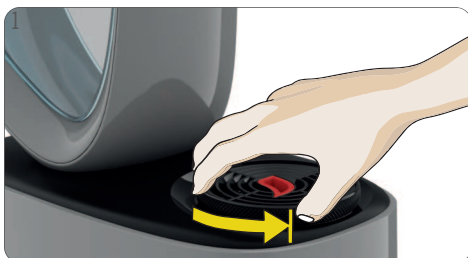


2  
Press the power button to switch on the machine. The power button starts blinking red while the machine is heating up for approximately 40 seconds. Afterwards the power button lights steady green.

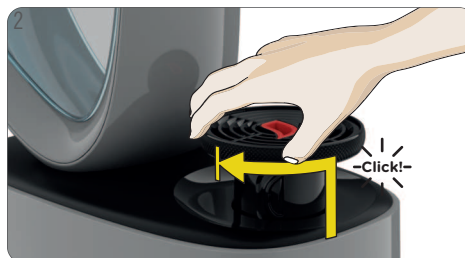


3  
The machine can also be switched on by removing the capsule holder.

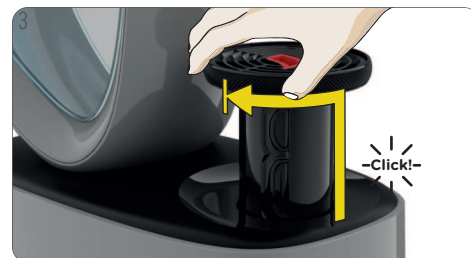
#### 3.3 LIFT & CLICK DRIP TRAY



1  
To adjust the drip tray position: Turn the drip tray counter clockwise to unlock it.



2  
Lift the drip tray up to the middle position. Lock the drip tray by turning it clockwise until it clicks. The drip tray is locked.



3  
Lift the drip tray up to the highest position. Lock the drip tray by turning it clockwise until it clicks. The drip tray is locked.

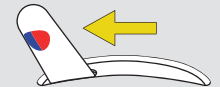
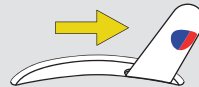
# 4. BEVERAGE EXAMPLES



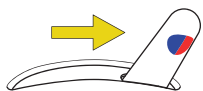
Adjust the drip tray



Choose hot or cold



## ESPRESSO

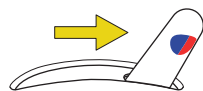


35 ml  
Ristretto

50 ml  
Espresso  
Espresso Intenso



## GRANDE/AMERICANO MORNING CUP

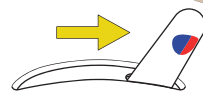


300 ml

## CAPPUCCINO

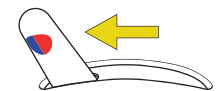


① + ②



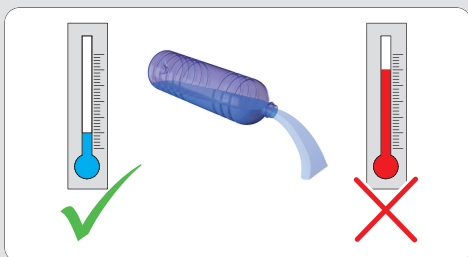
200 ml + 40 ml = 240 ml

## COLD BREW

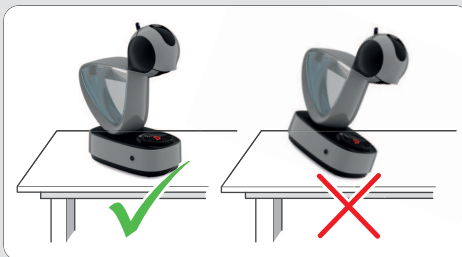


150 g + 150 ml = 300 ml

## 5. RECOMMENDATIONS FOR SAFE USE



- ⚠ Never add hot water to the water tank!
- ⚠ For rinsing and beverage preparation use only drinking water.



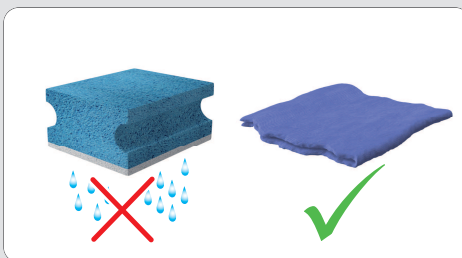
- ⚠ Always keep the machine upright!



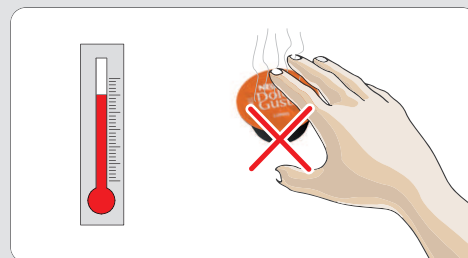
- ⚠ After finishing the preparation the power button blinks red for about 8 seconds. During that time do not open the locking handle!



- ⚠ Do not touch the plug with wet hands. Do not touch the machine with wet hands!



- ⚠ Never use a wet sponge. Only use a soft damp cloth to clean the top of the machine.



- ⚠ Do not touch the used capsule after the beverage preparation! Hot surface, risk of burns!



- ⚠ Never touch the injector!



- ⚠ Do not use the rinsing tool for tea or hot water preparation.



- ⚠ If away for more than 2 days (on holidays etc.) the machine must be emptied and cleaned. Before reuse rinse machine according to instructions in 8. "CLEANING" on page 13, beginning with step 4 to step 8.

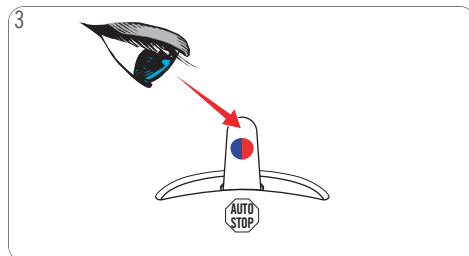
## 6. FIRST USE RINSING



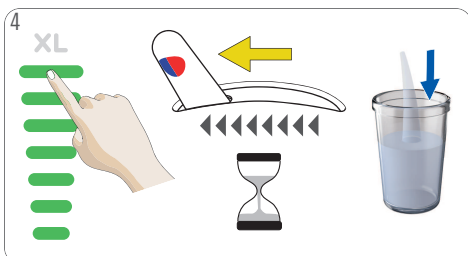
1 Rinse the water tank manually with fresh drinking water. Fill the water tank with fresh drinking water. Insert the water tank into the machine.



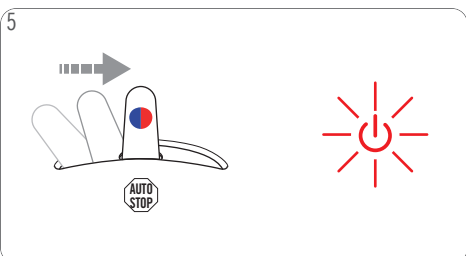
2 Open the locking handle. Make sure that the rinsing tool is in the capsule holder and the capsule holder is in the machine. Close the locking handle. Place a large empty container underneath the coffee outlet.



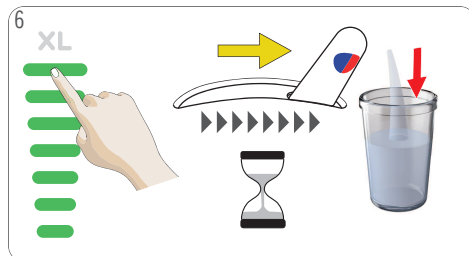
3 Make sure that the selection lever is in the "STOP" position. Ensure to use the correct mains voltage as given in 2. "MACHINE OVERVIEW" on page 5.



4 Select 7 bars on the touch interface. Push the selection lever to the "COLD" position. The machine starts rinsing.



5 Wait until the lever automatically moves to the "STOP" position. The machine stops rinsing. The power button blinks red for about 8 seconds.



6 Select 7 bars on the touch interface. Push the selection lever to the "HOT" position. The machine starts rinsing.



7 Wait until the lever moves to the "STOP" position. Open the locking handle. Pull out the capsule holder. Remove the rinsing tool. Reinsert the capsule holder.



8 Empty the container. Fill the water tank with fresh drinking water. Insert the water tank into the machine.



## 7. PREPARING A BEVERAGE

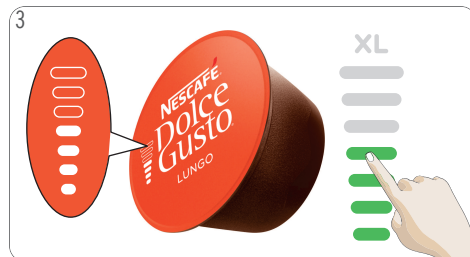
### 7.1 ONE CAPSULE (E. G. LUNGO)



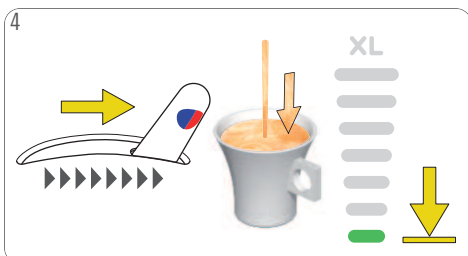
To adjust the drip tray position: Turn the drip tray counter clockwise to unlock it. Lift it to the desired position and lock it by turning it clockwise until it clicks. The drip tray is locked.



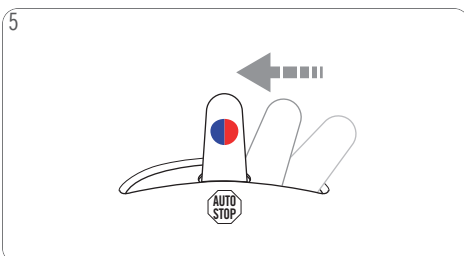
See "BEVERAGE EXAMPLES" or package. Open the locking handle. Pull out the capsule holder. Make sure the rinsing tool is not inside. Insert the capsule in the capsule holder. Insert it back into the machine. Close the locking handle. Place the cup with the correct cup size on the drip tray.



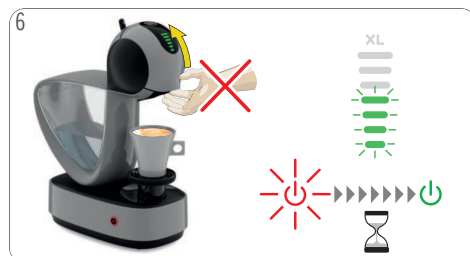
Use the touch interface to select the amount of level bars shown on the capsule, or adjust to your taste. Choose XL level bars for an extra large cup.



Push the selection lever to the "HOT" or "COLD" position as recommended on the capsule packs. The beverage preparation starts and the level bars go down progressively.



Wait until the lever automatically moves to the "STOP" position. The machine stops the preparation.



After finishing the preparation the power button and the level bars blink for up to 8 seconds. **During that time do not open the locking handle!**



After the extraction is finished open the locking handle. Remove the cup from the drip tray.



Pull out the capsule holder. Remove the used capsule and dispose of it into a bin. Wait around 1.5 min if you want to prepare a second extra large cup.



Rinse the capsule holder with fresh drinking water from both sides. Dry the capsule holder. Insert it back into the machine. Enjoy your beverage!



## 7. PREPARING A BEVERAGE

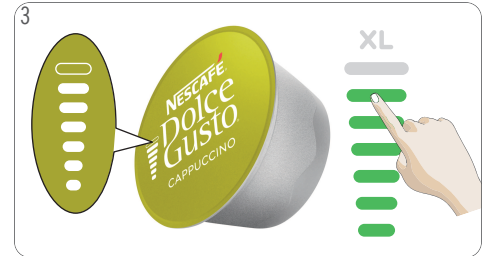
### 7.2 TWO CAPSULES (E. G. CAPPUCCINO)



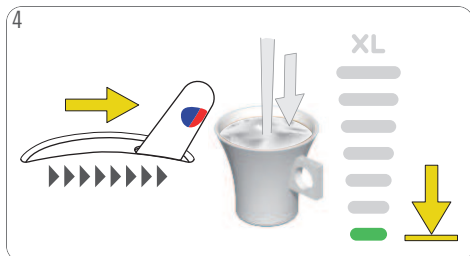
To adjust the drip tray position: Turn the drip tray counter clockwise to unlock it. Lift it to the desired position and lock it by turning it clockwise until it clicks. The drip tray is locked.



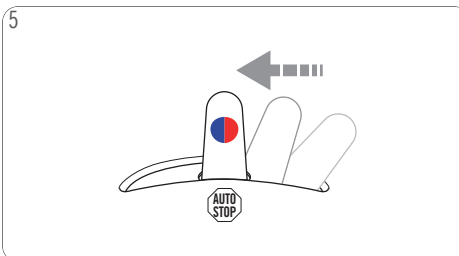
See "BEVERAGE EXAMPLES" or package. Open the locking handle. Pull out the capsule holder. Make sure the rinsing tool is not inside. Insert the first capsule in the capsule holder. Insert it back into the machine. Close the locking handle. Place the cup with the correct cup size on the drip tray.



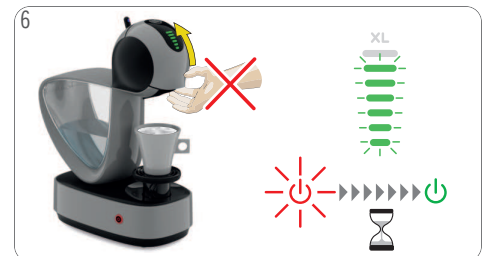
Use the touch interface to select the amount of level bars shown on the capsule, or adjust to your taste. Choose XL level bars for an extra large cup.



Push the selection lever to the "HOT" or "COLD" position as recommended on the capsule packs. The beverage preparation starts and the level bars go down progressively.



Wait until the lever automatically moves to the "STOP" position. The machine stops the preparation.



After finishing the preparation the power button and the level bars blink for up to 8 seconds. **During that time do not open the locking handle!**



Open the locking handle. Pull out the capsule holder. Remove the used capsule and dispose of it into a bin.



Insert the second capsule in the capsule holder. Insert it back into the machine. Close the locking handle.

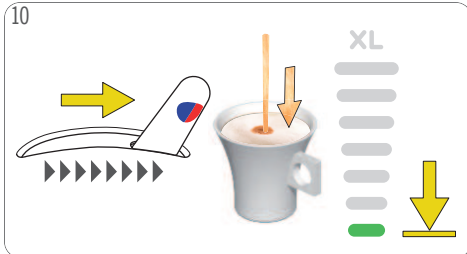


Use the touch interface to select the amount of level bars shown on the capsule, or adjust to your taste.

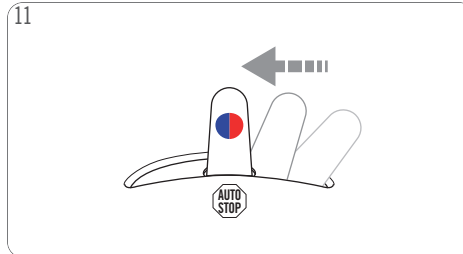


## 7. PREPARING A BEVERAGE

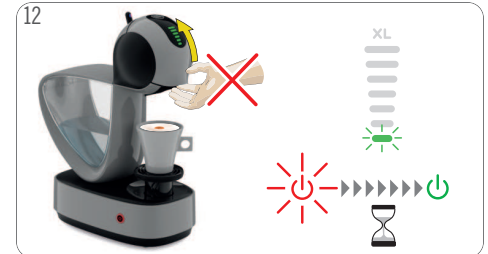
### 7.2 TWO CAPSULES (E. G. CAPPUCCINO)



Push the selection lever to the "HOT" or "COLD" position as recommended on the capsule packs. The beverage preparation starts and the level bars go down progressively.



Wait until the lever automatically moves to the "STOP" position. The machine stops the preparation.



After finishing the preparation the power button and the level bars blink for up to 8 seconds. **During that time do not open the locking handle!**



After the extraction is finished open the locking handle. Remove the cup from the drip tray. Wait around 1.5 min if you want to prepare a second extra large cup.

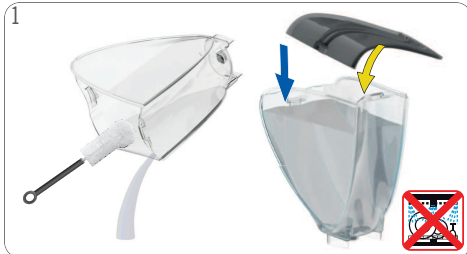


Pull out the capsule holder. Remove the used capsule and dispose of it into a bin.



Rinse the capsule holder with fresh drinking water from both sides. Dry the capsule holder. Insert it back into the machine. Enjoy your beverage!

## 8. CLEANING



Rinse and clean the water tank. Use a clean food-safe brush and washing-up liquid as needed. Afterwards refill with fresh drinking water and insert it into the machine. The water tank is not dishwasher safe!



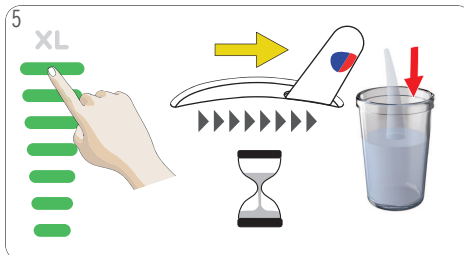
Separate the drip grid from the drip tray. Rinse the drip tray and the rinsing tool with fresh drinking water. Clean the drip tray with a clean food-safe brush. The drip tray is not dishwasher safe!



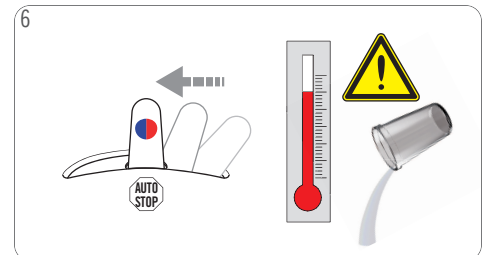
Clean both sides of the capsule holder with washing-up liquid and fresh drinking water. Alternatively wash in the dishwasher. Dry it afterwards.



Open the locking handle. Put the rinsing tool into the capsule holder. Insert the capsule holder into the machine. Close the locking handle. Place a large empty container underneath the coffee outlet.



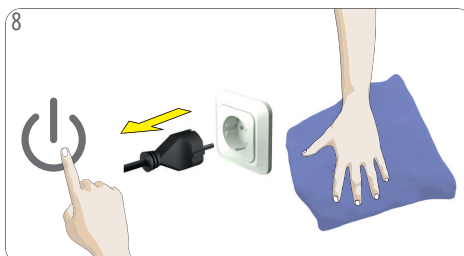
Select 7 bars on the touch interface. Push the selection lever to the "HOT" position. The machine starts rinsing.



Wait until the lever moves to the "STOP" position. Remove and empty the container. **Warning: Hot water! Handle with care!**



Open the locking handle. Pull out the capsule holder. Remove the rinsing tool. Reinsert the capsule holder. If any, remove the water from the water tank.



Switch off the machine. Unplug the power plug! Clean the machine with a soft damp cloth. Dry it afterwards with a soft dry cloth.



Use a soft cloth to dry the inside of the head, the capsule holder and the machine.



## 9. DESCALING AT LEAST EVERY 3–4 MONTHS

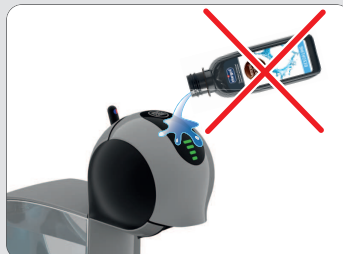


[www.dolce-gusto.com](http://www.dolce-gusto.com)

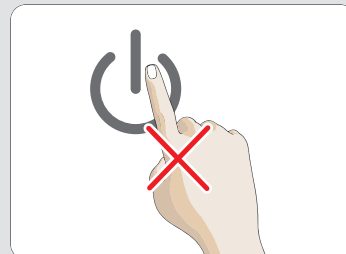
Use NESCAFÉ® Dolce Gusto® liquid descaler. To order, call the NESCAFÉ® Dolce Gusto® hotline or go on the NESCAFÉ® Dolce Gusto® website.



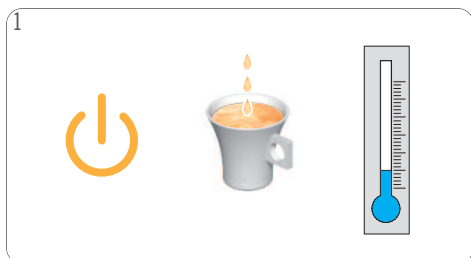
Do not use vinegar for descaling!



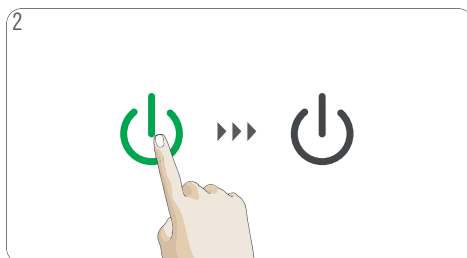
Avoid contact of the descaling liquid with any part of the machine.



Do not push the power button during the descaling cycle.



1  
If the beverage comes out slower than usual (even in droplets), or if it is cooler than usual or if the power button is steady orange (descaling signal), the machine has to be descaled.



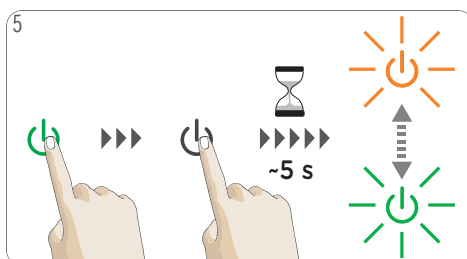
2  
Switch off the machine. If any, remove the water from the water tank.



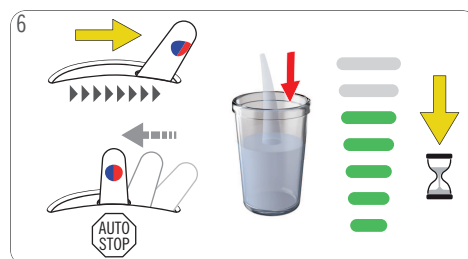
3  
Mix 0.5 liter fresh drinking water with the descaler in a measuring cup. Pour the descaling solution into the water tank and insert the water tank into the machine.



4  
Open the locking handle. Put the rinsing tool into the capsule holder. Insert the capsule holder into the machine. Close the locking handle. Place a large empty container underneath the coffee outlet.

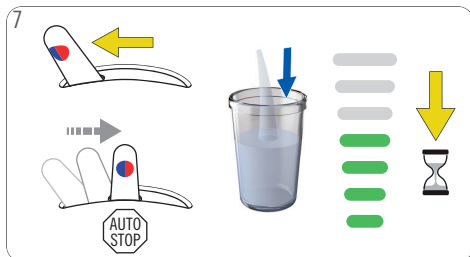


5  
Switch off the machine. Press and hold the power button for at least 5 seconds until the power button blinks alternatively green / orange.



6  
Push the selection lever to the "HOT" position. The machine descales in start-stop operation for approximately 2 minutes. The level bars go down progressively from 7 to 5. The lever comes back to the middle position.

## 9. DESCALING AT LEAST EVERY 3–4 MONTHS



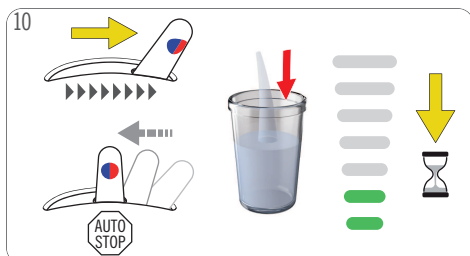
Push the selection lever to the "COLD" position. The machine descales continuously. The level bars go down progressively from 5 to 4. The lever comes back to the middle position.



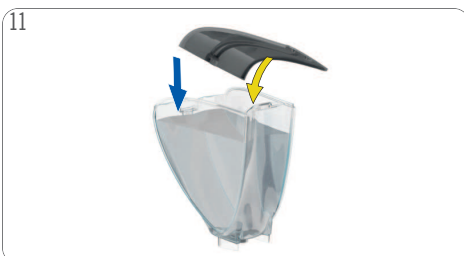
For a better effect of the descaler, the machine enters a waiting time of 2 minutes. The level bars go down progressively from 7 to 0.



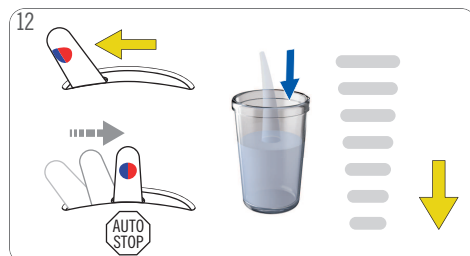
Empty and clean the container. Rinse and clean the water tank. Use a clean food-safe brush and washing-up liquid as needed. Afterwards refill with fresh drinking water and insert it into the machine.



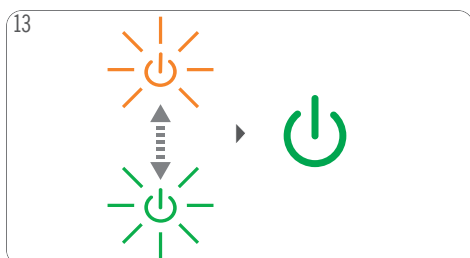
Push the selection lever to the "HOT" position. The machine starts rinsing. The level bars go down progressively from 4 to 2. The lever comes back to the middle position.



Refill the water tank with fresh drinking water and insert it into the machine.



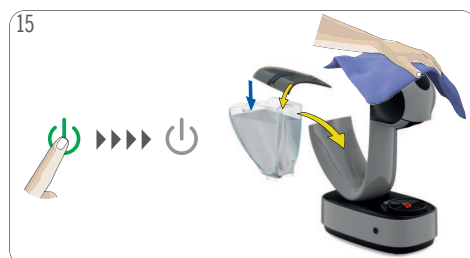
Push the selection lever to the "COLD" position. The machine starts rinsing. The level bars go down progressively from 2 to 0. The lever comes back to the middle position.



At the end of the rinsing cycle, the power button lights up green.



Open the locking handle. Pull out the capsule holder. Remove the rinsing tool. Rinse the capsule holder with fresh drinking water from both sides. Reinsert the capsule holder.



Switch off the machine. Fill the water tank with fresh drinking water. Insert it back into the machine. Clean the machine with a soft damp cloth. Dry it afterwards with a soft dry cloth.



## 10. TROUBLESHOOTING

### 10.1 ON / OFF ICON TURNED TO ORANGE COLOUR



ON / OFF ICON TURNED TO ORANGE COLOUR

1



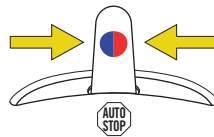
This means that the machine needs to be descaled. Follow instructions in 9. "DESCALING AT LEAST EVERY 3-4 MONTHS" on page 14.

### 10.2 NO LIQUID COMES OUT – NO WATER IN THE WATER TANK?



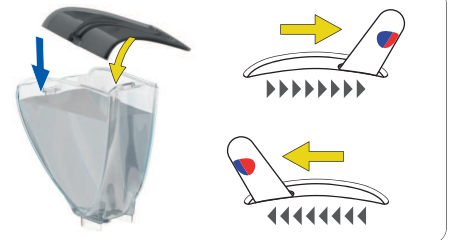
No liquid comes out and the machine makes a loud noise:  
The water tank may be empty.

1



Push the selection lever to the "STOP" position.

2

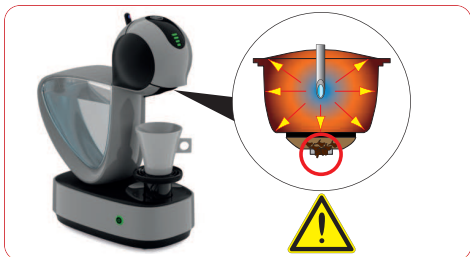


Check if the water tank contains enough fresh drinking water. If not, refill with fresh drinking water and push the selection lever to the "HOT" position respectively "COLD" to continue the preparation. If the water tank is full, proceed as described in "NO LIQUID COMES OUT – CAPSULE BLOCKED?" on page 17.

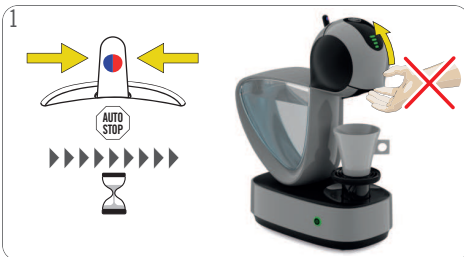


## 10. TROUBLESHOOTING

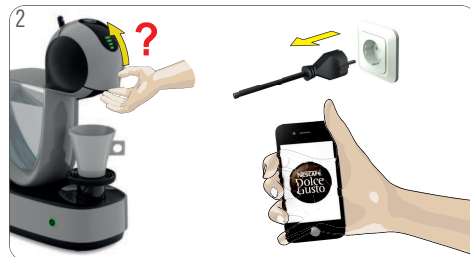
### 10.3 NO LIQUID COMES OUT – CAPSULE BLOCKED?



No liquid comes out: The capsule may be blocked and under pressure.



1 Push the selection lever to the "STOP" position. Open the locking handle. If the locking handle cannot be opened, wait for 20 minutes, try again.



2 If the locking handle can be opened, follow with step 3. If not, unplug the machine and call the NESCAFÉ® Dolce Gusto® hotline.

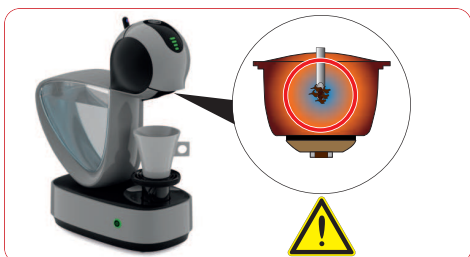


3 Do not drink the coffee! Remove the used capsule and dispose of it into a bin.



4 Try to operate the machine without capsule. If the water flows, it shows that the issue was with the capsule. Just use a different capsule. If not, follow with 10.4 "No liquid comes out - injector blocked".

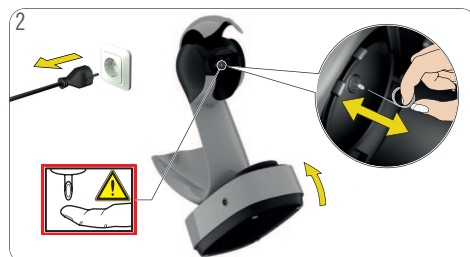
### 10.4 NO LIQUID COMES OUT – INJECTOR BLOCKED?



No liquid comes out: The injector may be blocked and under pressure.



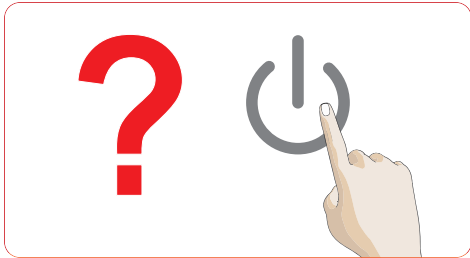
1 Ensure the drip tray is empty. Remove the water tank. Open the locking handle. Remove and tilt the drip tray. Take out the cleaning needle. **Keep the needle out of reach of children!**



2 Unplug the power plug! For better access to the injector tilt the machine. Never touch the injector with the finger! Clean the injector with the cleaning needle. Follow instructions in 9. "DESCALING AT LEAST EVERY 3-4 MONTHS" on page 14.

# 10. TROUBLESHOOTING

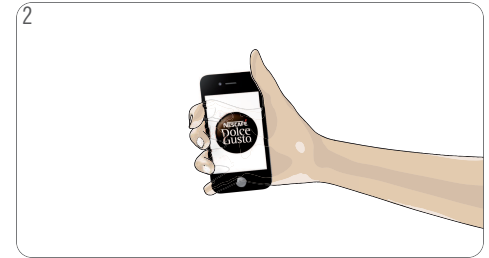
## 10.5 VARIOUS



The machine cannot be switched on.



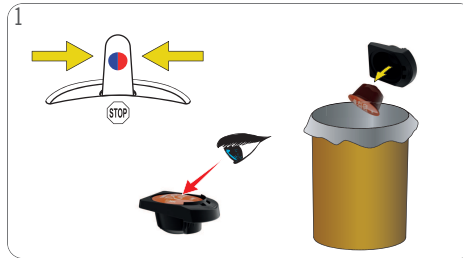
1 Check if the power plug is correctly plugged into a mains power socket. If yes, check your electricity supply.



2 If the machine still cannot be switched on, call the NESCAFÉ® Dolce Gusto® hotline. For the hotline numbers see "Machine Hotlines".



The beverage is splashing out of the coffee outlet.



1 Push the selection lever to the "STOP" position. Do not drink the coffee! Pull out the capsule holder. Remove the used capsule and dispose of it into a bin.



2 Clean the interior of the head. Insert a new capsule in the capsule holder and insert it back into machine.



If the beverage comes out slower than usual (even in droplets), try another capsule. If the problem persists, the machine has to be descaled.



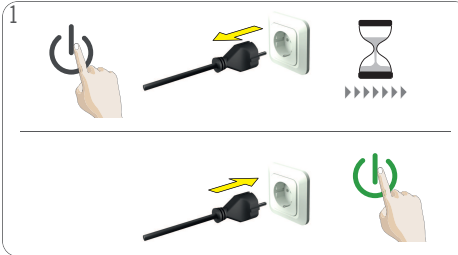
1 Use NESCAFÉ® Dolce Gusto® liquid descaler. To order, call the NESCAFÉ® Dolce Gusto® hotline or go on the NESCAFÉ® Dolce Gusto® website.

# 10. TROUBLESHOOTING

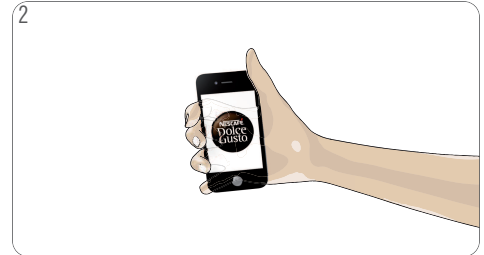
## 10.5 VARIOUS



The power button flashes red fast.



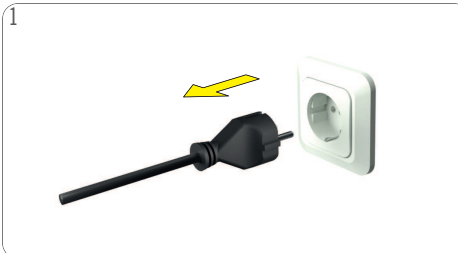
Switch off the machine. Unplug the power plug and wait 20 minutes. Remove the capsule holder and throw the capsule away. Afterwards plug the power plug into the mains power socket and switch the machine on.



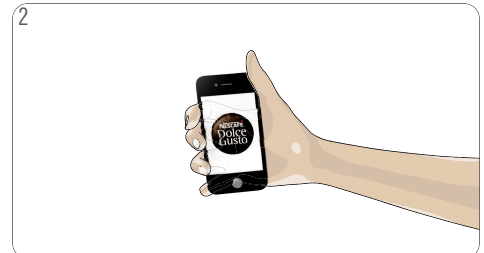
If the power button still flashes red call the NESCAFÉ® Dolce Gusto® hotline. For the hotline numbers see "Machine Hotlines".



Water accumulates underneath or around the machine. Clear water leaks around the capsule holder during the beverage preparation.



Unplug the power plug!



Call the NESCAFÉ® Dolce Gusto® hotline or go on the NESCAFÉ® Dolce Gusto® website. For the hotline numbers see last page.



Water is splashing out of the coffee outlet during rinsing or descaling.



Put the rinsing tool into the capsule holder. Insert the capsule holder into the machine.



## HOTLINES

AR 0800 999 81 00  
BR 0800 7762233  
CA 1 888 809 9267  
CH 0800 86 00 85  
CL 800 213 006  
CO 01800-05-15566  
CR 0-800-542-5444  
DO (809) 508-5100  
EC 1800 637-853 (1800 NESTLE)  
GT 1-800-299-0019  
HN 800-2220-6666  
MX 800 365 2348  
NI 1-800-4000  
PA 800-0000  
PE 080010210  
PY 0800-112121  
TI (868) 663-6832  
US 1-800-745-3391  
UY 0800-2122



AT 0800 365 23 48  
BE 0800 93217  
BG 0 700 10 330  
CZ 800 135 135  
DE 0800 365 23 48  
DK 80 300 100  
EE 6 177 441

ES 900 10 21 21  
FI 0800 0 6161  
FR 0 800 97 07 80  
GB 0800 707 6066  
GR 210 6371000  
HR 0800 600 604  
HU 06 40 214 200

IE 00800 6378 5385  
IT 800365234  
KZ 8-800-080-2880  
LT 8 700 55 200  
LU 8002 3183  
LV 67508056  
MA 080 100 52 54

MK 0800 00 200  
MT 80074114  
NL 0800-3652348  
NO 800 80 730  
PL 0800 174 902  
PT 800 200 153  
RO 0 800 8 637 853

SK 0800 135 135  
SR 0800 000 100  
SV 020-299200  
TR 0800 211 02 18  
4 44 31 60  
UA 0 800 50 30 10

AL 0842 640 10  
ZA 086 009 6116  
+27 11 514 6116  
AU 1800 466 975  
NZ 0800 365 234

AE 800348786  
BA 0800 202 42  
CN 4006304868  
HK (852) 21798999  
ID 0800 182 1028  
IL 1-700-50-20-54  
JO +96265902997  
JP 0120-879-816  
KR 080-234-0070  
KW +965 22286847  
LB +9614548593  
ME 020 269 902  
Middle East: +97143634100  
MY 1800 88 3633  
PH 898-0061  
PK 0800-62282  
QA +97444587615  
RU 8-800-700-79-79  
SA 8008971971  
SG 1 800 836 7009  
SI 080 45 05  
TH 1-800-295588  
0-2657-8601  
TW 0800-000-338  
VN 1800 6699