



De'Longhi



3D COMFORT
AIR

**AIR PURIFIER
FAN • HEATER**

Get Started

This short guide is not
intended to explain
all the functions
of the appliance.
Please read all the
owner's instruction booklet
before use.

HFX85W15 Series

3D COMFORT AIR PURIFIER • FAN • HEATER



Welcome to your comfort zone – 365 days of comfort for you and your family. Expect the perfect balance of even, gentle airflow from left-to-right, and head-to-toe, without experiencing hot spots or drafts. Enjoy fresh, clean air as 99.9%* of fine particles such as allergens and pollutants are removed by the 360 degree, double layer, HEPA type filter. You will be warmed gently in the winter, comforted by improved air circulation in the summer and rewarded with clean air all year round.

*Third party organization test on MPPS particles to EN 1822:2010. 99.9% efficiency refers to small particles of 5m at 60 m3/h (cooling fan speed n.5).



Air Purification

As long as your unit is on, you will be reaping the rewards of clean, fresh air as the air purifier works full time to offer the best results possible.



Heating

The wrap around heating effect can be customized further with temperature setting, 6 fan speeds and high/low directional airflow option.



Air Circulation

The heavy duty fan offers a range of 10 different speeds, offering you the ultimate choice of just how much air circulation you need and want.

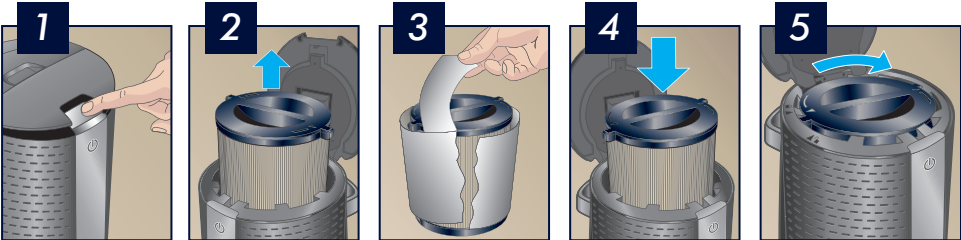
HOW IT WORKS



- A. On/Standby button
- B. Lid release button
- C. Air purification filter
- D. Remote control
- E. Control panel
- F. Heater button
- F1. Heating mode
- G1. Temperature button
- G1. Temperature indicator (C and F)
- H. ECO button
- H1. ECO function
- I. Airflow directional button
- J. Oscillation button
- K. Timer button
- K1. Timer function
- L. Fan speed buttons
- L1. Fan speed indicator
- M. Fan button
- M1. Fan mode
- N. Hours indicator
- O. Power light indicator
- P. Remote control reception area
- Q. Handle
- R. Air inlets
- S. Air outlets
- T. Remote control holder

GETTING STARTED

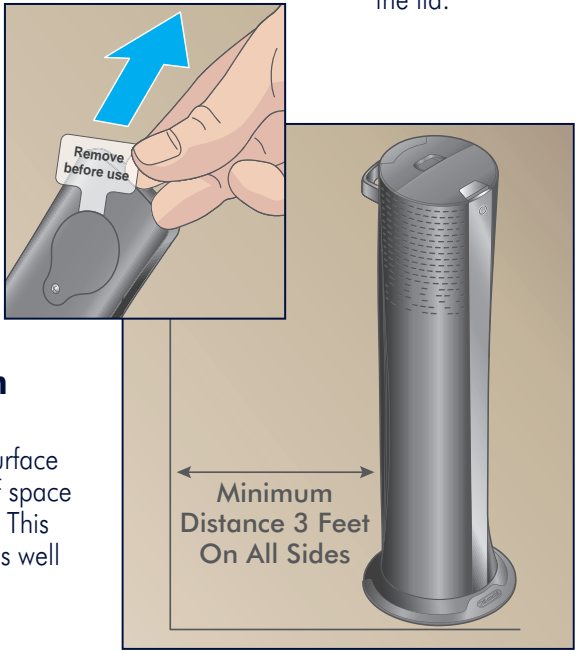
Before turning on your unit, you need to remove the protective wrapper from the HEPA type filter that is already installed inside.



- 1 Press the lid release button to expose the filter.
- 2 Lift the filter completely out of the unit.
- 3 Carefully remove the protective wrapper.
- 4 Replace the filter back into the unit and align it with the unlock symbol.
- 5 Rotate filter counter clockwise until the pointer on the cover of the filter aligns with the lock symbol and close the lid.

Activating the battery in the Remote Control

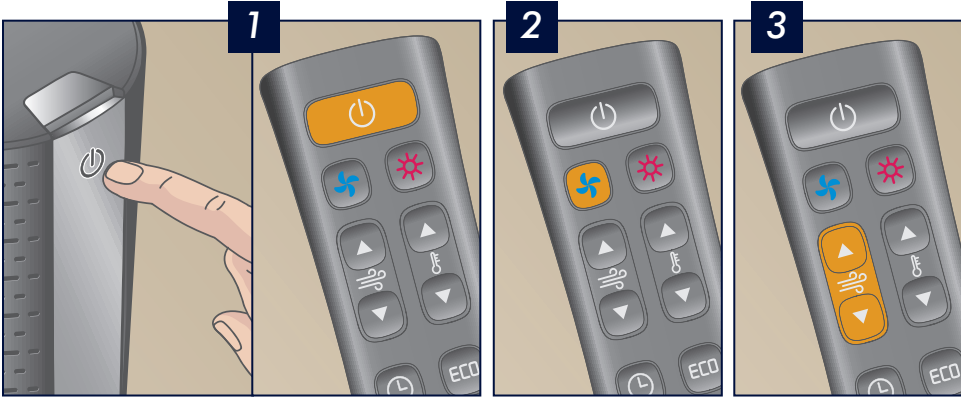
Pull and remove the battery cover strip that is extending from the battery compartment on the back of the remote control. This will activate the internal battery and make it ready for use.



Placing the unit in a room

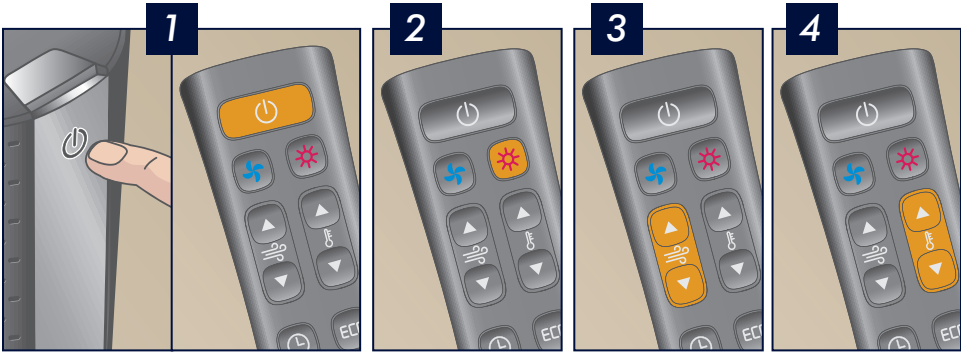
For safety purposes and optimum performance, please select a flat surface and allow at least 3 feet (0.9 m) of space on all sides of the unit and the top. This will allow for maximum air intake as well airflow leaving the unit.

FAN



- 1 Turn ON the unit.
- 2 Activate fan mode.
- 3 Select fan speed from 1 to 10.

HEATER



- 1 Turn ON the unit.
- 2 Activate heater mode.
- 3 Select fan speed from 1 to 6.
- 4 Select Temperature.

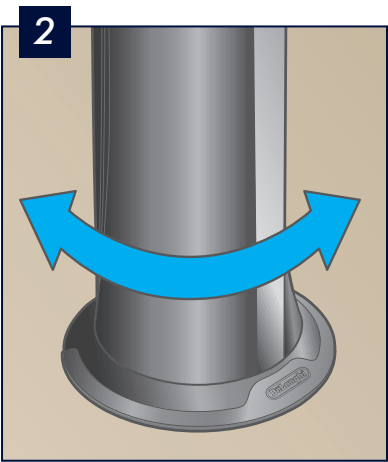
Air Purification

As long as your unit is in the ON mode, your air purification system is working and you do not have to do, or touch anything, to activate this function.

OSCILLATION



Note
If you are in oscillation mode and press any other function button, the oscillation function will pause for 10-15 seconds and then resume automatically.



Turn ON / OFF the oscillation button.

Unit oscillates from side to side.

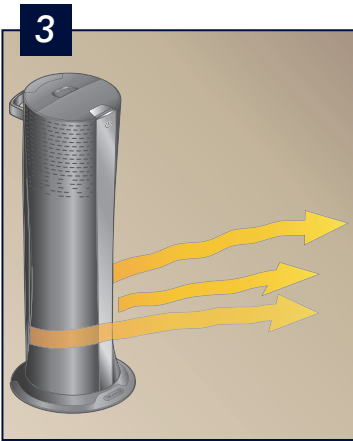
AIRFLOW DIRECTION



Press button for low or high airflow.

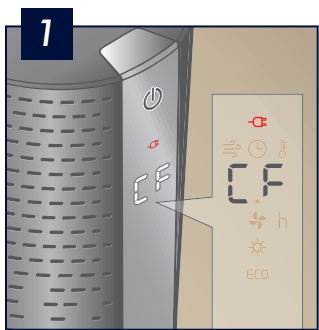


For low directional airflow.

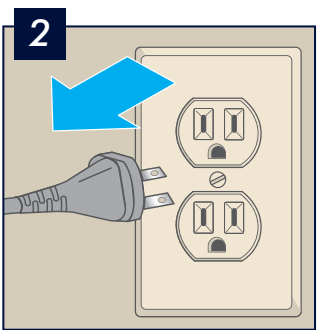


For high directional airflow.

CHANGE FILTER



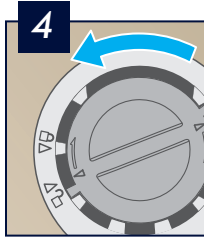
When CF appears, you need to change the filter.



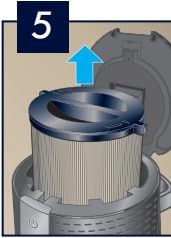
Remove plug from outlet.



Press the lid release button to expose the filter.



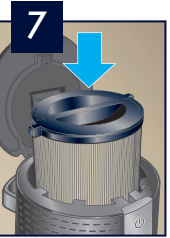
Rotate filter counter-clockwise until the pointer on filter aligns with the unlock symbol.



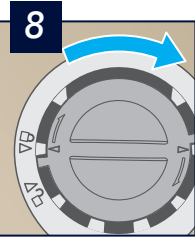
Lift the old filter completely out of the unit.



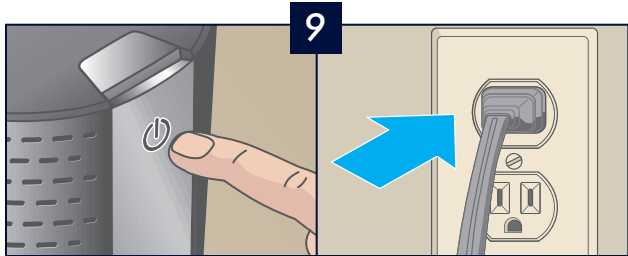
Carefully remove the protective wrapper from the new filter.



Replace the new filter back into the unit.



Rotate filter clockwise until the pointer on filter aligns with the lock symbol and close the lid.





To reset Change Filter notification, press in the ON/OFF button while at the same time plugging the unit into an outlet.

Always use an original DeLonghi replacement filter (model DLSA005) which can be ordered from www.delonghi.com.



www.delonghi.com

 like us: DeLonghi North America –  follow us @DeLonghiNA