



Living innovation

意大利·德龙

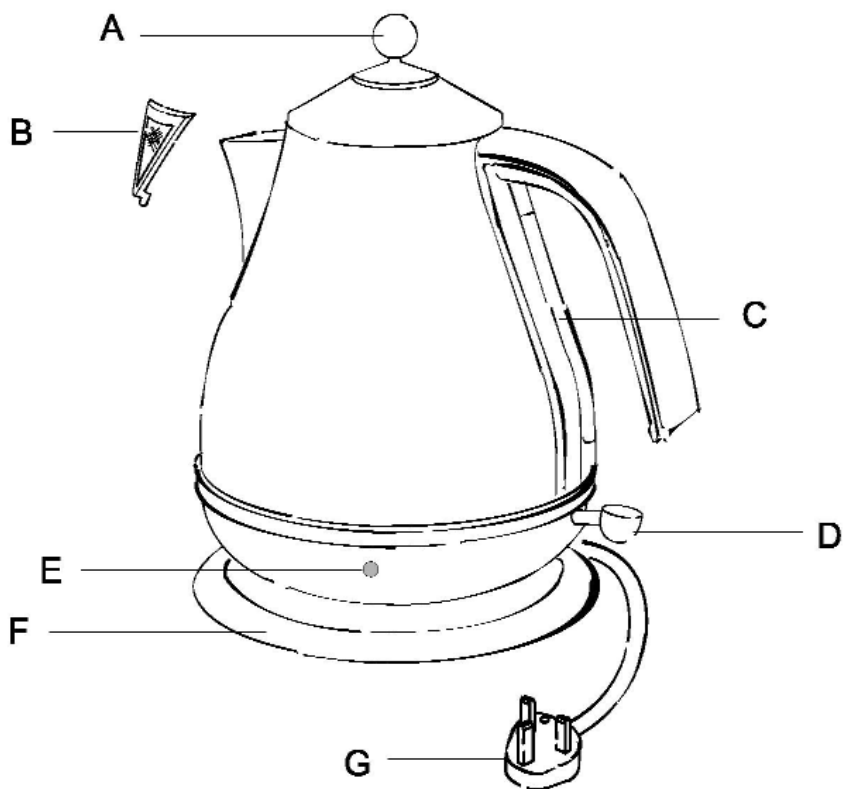
电 水 壶

使 用 说 明 书

CORDLESS KETTLE



KBO2001



- A、壶盖
- B、过滤网
- C、水位指示条
- D、ON/OFF开关
- E、指示灯
- F、360°可旋转底座(带电源存储架)
- G、电源插头

■ 重要安全提示

●请在安装、使用本机器前仔细阅读说明书，并保存好以便日后查阅。

●确保您所使用的电压与机器铭牌所示的电压相一致。

●为避免用电危险，不要将插头、底座或水壶浸入水或其他液体中。不要在浴室或任何靠近水源的地方使用。不要在室外使用。

—不要接触热的表面，如壶体表面或壶盖。请使用手柄或壶盖把手。

—当水沸时请不要取下壶盖。

—倒水时请小心不要溢出，倾倒时水可能会渗入开关装置中。

—水开后会自动保温很长一段时间，为避免烫伤，请勿将水壶放在工作台边缘，避免儿童接触。

●有心理、身体或者感官障碍、或不具备足够的经验或者知识的人（包括儿童）不允许使用该机器，除非有对他们的安全负责的人密切监督并指导进行。必须监督儿童，确保他们不玩弄该电器。

●请不要让电线悬在桌边，工作台边，或其他可能被意外勾拉到的地方。

●烧水时请勿让儿童靠近。

●当不使用或进行清洁前请先拔下插头。在进行清洁之前请等待机器冷却。

●在倒水时请将水壶从底座上拿开。

●在使用时请不要移动水壶。

●请勿将水壶、底座、插头等靠近电炉、烤架或灶台等。

●除烧水外请勿作它用。请勿将任何其他器具放进水壶中，请勿使用非原配配件，否则有可能造成火灾、短路或人身伤害。

●请勿无盖时使用。

注意，不要在倾斜的表面上使用该机器。

在使用过程中不要移动机器。

●在开启机器前请先正确的将电水壶安装到底座上。

●使用前请正确安装在底座上。

●仅用原配底座安放水壶。

●如果底座、插头有损坏，请勿使用水壶。

如果水壶有任何故障或损坏，务必返回服务中心修理以避免伤害。

●如果水壶加水过多，沸腾时会溢出。

●该电水壶所使用的材料及配件均符合欧盟EC 1935/2004指令。

不遵循以上注意事项，有可能会损坏电水壶。

使用前准备工作

●从包装中取出电水壶及底座。

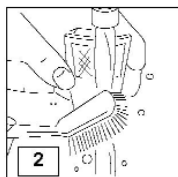
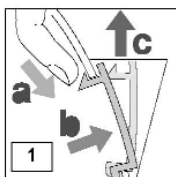
●将不锈钢表面的标贴撕掉。

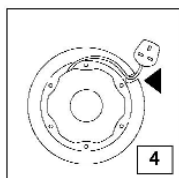
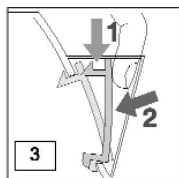
●取出过滤网(如图1)用水冲洗(如图2)。详见“如何取出过滤网”章节。

●往电水壶中加入水，并煮沸。

●水煮沸后倒掉，再用清水清洗水壶，反复三次，已清洗掉生产时的灰尘。

●电水壶冲洗干净后，请重新装上过滤网(如图3)。





■ 电水壶使用

360度接入式电源底座

特殊设计，中心接入式底座，您可在任何角度安装水壶。

- 电线长度调节到合适位置（如图4）。
- 请勿将多余电线悬在工作台面上。

往电水壶中装水

● 在往电水壶中装水前，先将电水壶从底座上取下。

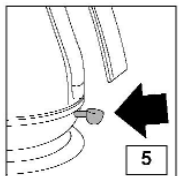
● 取下电水壶盖，并往其中加水到您所想要的位置。

—为防止电水壶中的水烧干，加入的水不能少于0.3升。这样会缩短电水壶的寿命。

—电水壶中加入的水也不能多于1.7升（MAX这是最高水位）。如果加入的水超过这个位置，煮沸时会溢出来导致烫伤。

开启电水壶

- 接通电源。
- 将电水壶放到底座上。
- 往下按一下ON/OFF开关(如图5)开启电水壶。



● 电水壶指示灯亮起。

● 当水煮沸时电水壶会自动关闭。(ON/OFF开关会咔嚓一声自动往上跳起，同时指示灯关闭)。

● 如需在水没有煮沸前关闭电水壶，您可以将ON/OFF开关往上掰一下或直接将电水壶从底座上拿开(此时电水壶会自动关闭)。

倒水

● 当您把电水壶从底座上取下时，底座上可能会有水汽。水汽是从电水壶底部的小孔中散发出来的。这属于正常现象。

■ 安全装置

1) 自动ON/OFF开关。

该电水壶配有自动ON/OFF开关键，一旦水煮沸后，电水壶会自动关闭。如果水刚刚煮沸，如需再次煮沸，则需要再等待1分钟左右才可以再次煮沸。不要试图将ON/OFF开关键放置在开启状态或调整开关装置。

2) 安全装置

电水壶在开启状态下，如果水太少或无水，安全装置会自动切断电源，以防止电水壶烧坏。

如果安全装置启动，在再次加入水之前先将电源插头拔下并待其冷却（否则会损坏电水壶配件）。

3) 如果电水壶在开启状态下从底座上取下，电水壶会自动关闭电源。

■ 保养和维护

清洗电水壶

- 在进行清洗之前，先将电水壶插头拔下，并待其完全冷却。
- 切勿将电水壶或底座浸入水中。
- 先用一块柔软的湿布来清洁电水壶的表面，再用一块柔软的干布擦干。
- 不要用金属材质或粗糙东西来擦电水壶。
- 确保所有的接口和插头保持干燥。

除垢

- 水垢在大多数水质中都会发生，硬水所含钙质多于软水。
- 当水加热时，矿物质聚集在内壁表面，像白色塑料片。传统的水壶，水垢结成硬皮，这会减少水壶寿命。因此，在清洗过滤器时发现薄膜依附，请立刻清洗。

过滤网除垢

- 该电水壶配有一个过滤网，倒水时可以过滤掉一部分水垢。该过滤网是可取下并可洗的。清洁过滤网的频率要视您所在区域水的硬度及您使用电水壶的频率而定的。当过滤网上有沉淀物或倒水时速度变慢时请取下过滤网清洗。

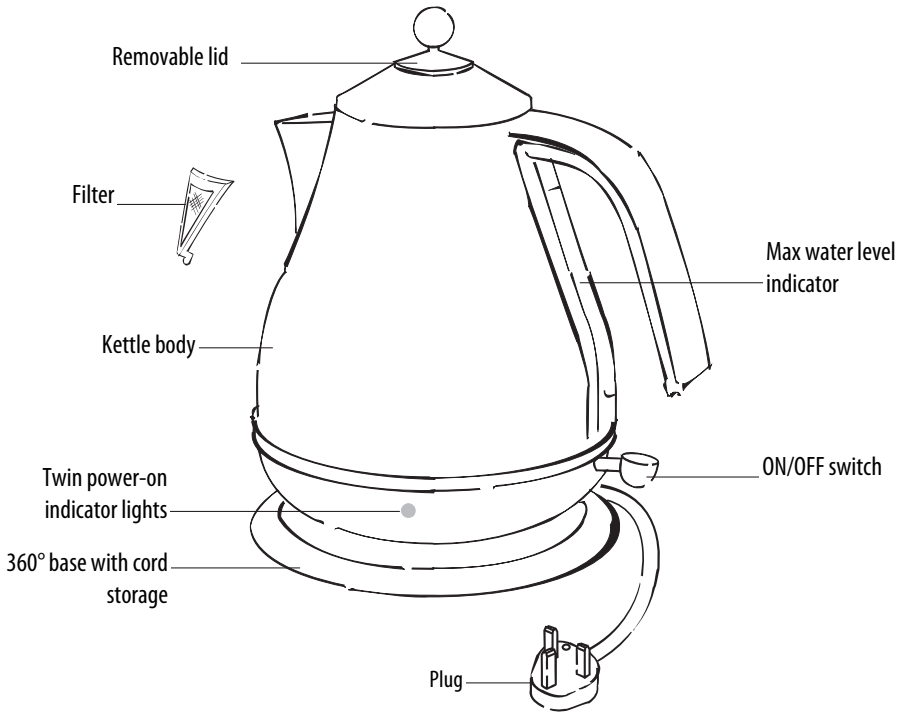
如何取下过滤网

- 确保电水壶完全冷却。
- 拔下电源插头。
- 确保您的手干净，并远离肥皂、油脂或其他有可能污染水的东西。
- 将电水壶中的水倒空，按图1所示的方法取下过滤网(如图1)。
- 在水龙头下用一把柔软的刷子刷干净(如图2)。
- 将过滤网装回电水壶(如图3)。

水壶内部除垢

- 定期清洗除垢是维持水壶正常工作的重要保证。
- 使用电水壶除垢剂进行除垢。当底部加热原件表面有污垢时，请购买合适的除垢剂进行除垢。除完垢后用新鲜的水煮沸后倒空，这样反复几次将剩余的除垢剂冲洗干净，以免损坏机器。如果过滤网也需要除垢，那么将过滤网取下，浸入除垢剂中，用同样的方法清洗。
- 在使用电水壶前请确保所有的电器部件均是干燥的。

Description of Appliance



Thank you for choosing this De'Longhi kettle. To get the best results from your new kettle, read these instructions carefully and retain for future reference. This is the only way to ensure optimum results and maximum safety.

Safety Warnings

Please read these instructions before operating and retain for future reference.

- Ensure that your mains supply voltage is the same as that marked on the underside of your kettle.
- To protect against electrical hazards do not immerse the mains lead, plug power base or kettle in water or any other liquid. Do not use in the bathroom or near any source of water. Do not use outdoors.
- Do not touch hot surfaces i.e. body or lid. Use handles or knobs.
- Do not remove the lid while the kettle is boiling.
- Take care when pouring - do not over-tilt the kettle as water may enter into the switch mechanism.
- Water can remain hot for a long time after boiling and can present a scald hazard. Keep the kettle and the mains lead away from the edge of the work surface and out of the reach of children.
- Do not allow the mains lead to hang over the edge of the table or work surface.
- The appliance is not intended for use by persons (including children) with reduced physical, sensory or mental capabilities, or lack of experience and knowledge, unless they have been given supervision or instruction concerning use of the appliance by a person responsible for their safety. Children should be supervised to ensure that they do not play with the appliance.
- Remove the plug from the mains socket when not in use and before cleaning. Allow the kettle to cool before cleaning.
- Remove the kettle from its power base before filling.
- Avoid contact with steam coming out of the spout when pouring, and out of the lid or spout when refilling.
- **Caution:** Do not operate the kettle on an inclined surface.
- Never move the kettle while it is in use.
- Do not use the kettle if you have wet hands.
- Keep the kettle, the power base, and the mains lead away from hotplates, hobs or burners.
- Do not use the kettle for any purpose other than heating water.
- De'Longhi will not accept any liability if the appliance is subject to improper use, or failure to comply with these instructions
- Do not place any utensils into the kettle. The use of accessory attachments not recommended by the appliance manufacturer may result in fire, electric shock or personal injury.
- Never use the kettle without its lid.
- Position the kettle properly on the power base before switching on.
- Use the kettle only with the power base supplied (and vice versa).
- Do not operate this kettle if the mains lead or plug is damaged, if the kettle malfunctions, or has been damaged in any manner. It must be returned to an authorised service agent for repair or replacement in order to avoid hazard.
- The power cable must not be replaced by the user as this requires the use of special tools. If the supply cord is damaged, it must be replaced by the manufacturer, its service agent or similarly qualified persons in order to avoid a hazard.
- If the kettle is overfilled, boiling water may overflow.

Materials and accessories coming into contact with food conform to EC regulation 1935/2004.

Using for the first time

- Before use, check that the appliance has not been damaged during transport.
- Remove all packaging from the kettle and power base.
- Remove any labels from the outer surfaces except the rating label.
- Remove the filter (fig. 1) and wash it with water (fig. 2) (refer to page 5 “Removing the scale filter”).
- Fill the kettle to the max level and boil.
- The boiled water should be discarded and the kettle rinsed out with cold water. This procedure should be carried out twice to remove any manufacturing dust, etc.
- After the kettle has been rinsed out, refit the filter (fig. 3).

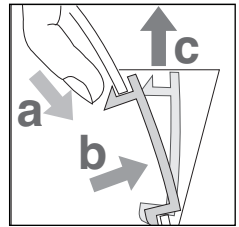


Fig.1

Using the kettle

With the specially designed power base and central connector, you can now set the kettle on the base at any angle, from any position.

- Release cord from storage base and adjust length by winding around the base to give the correct cord length to reach the plug socket to be used (fig. 4).
- Do not leave loose cord hanging over the edge of work surfaces.

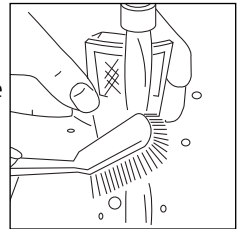


Fig.2

Filling

- Remove the kettle from the base unit before filling.
- Remove the lid and fill the kettle to the desired level.

Do not fill with less than 0,3 litre of water (min level) to prevent the kettle running dry while in use; misuse of this kind will shorten the life of the element.

Do not fill with more than 1,7 litres of water (max. level).

If the kettle is overfilled, there is a risk that boiling water may overflow and cause burns.

- To close the lid, push it onto the kettle body until it clicks firmly into place.
- The water level indicator enables you to see the quantity of water in the kettle.

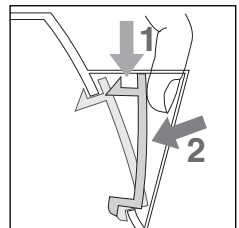


Fig.3

Switching on

- Plug the power base into the mains socket.
- Place the kettle on the power base.
- Press the ON/OFF switch down (fig.5) to switch the kettle on.
- The power-on indicator lights will illuminate.
- The kettle will automatically switch off once the water is boiled (the ON/OFF switch will click upwards and the lights will switch off).
- To turn the kettle off before the water boils, you may move the ON/OFF switch up to the OFF position, or simply lift the kettle from its base - it will switch off and the switch will return to the OFF position automatically.

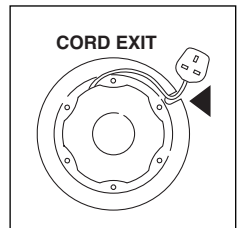


Fig.4

Pouring

- Remove the kettle from the power base and carefully pour out the water. Do not tilt the kettle suddenly or pour water out at too sharp an angle.
- When you lift the kettle from the base, you may see moisture on the top surface of the base. Condensation on the base is perfectly normal, and should not be a cause for alarm.

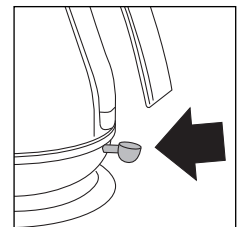


Fig.5

Safety devices

1) Automatic ON/OFF switch

Your kettle is fitted with an ON/OFF switch which automatically switches off once the water has boiled. If the kettle has

just boiled, wait a minute or so before re-boiling the kettle. Do not attempt to hold the ON/OFF switch in the “on” position or adjust the switch mechanism.

2) **Safety cut-out**

If the kettle is switched ON with too little or no water, it is protected against damage by a safety cut-out device which will switch off the power.

If this cut-out operates, disconnect the kettle from the mains supply and **leave to cool down** before refilling with cold water (otherwise the element could be damaged). It will reset automatically when cooled down.

3) If the kettle is lifted from base while operating (ON), it will automatically switch off.

Cleaning and maintenance

Cleaning the kettle

- Allow the kettle to cool down fully and disconnect the appliance from the mains before cleaning.
- Do not immerse the kettle or base in water.
- Use a soft dampened cloth to wipe the outside of the kettle and dry with a soft, dry cloth.
- DO NOT use harsh scouring agents.
- Ensure that all electrical connectors and sockets are kept dry.

Scale

Scale is mainly calcium carbonate (chalk), a harmless, naturally occurring mineral found in most water supplies. “Hard” water contains more of this mineral than “soft” water.

When the water is heated, the minerals in the water solidify, making the water appear cloudy. These minerals form a thin film on the walls, element and on the surface of the water. The water may look like it has white coloured pieces of plastic floating on the surface. On traditional kettle elements, scale forms a hard white “crust” which adversely affects performance and reduces the life of the element. As soon as you notice a film forming on the water, or on the interior walls of the kettle, simply rinse the kettle and wipe it out.

Scale filter

Your kettle is fitted with a scale filter to prevent loose particles of scale being poured into your beverage. This filter is both removable and washable. The frequency with which you will need to clean any scale deposits from your filter will depend on the hardness of water in your area and how often you use the kettle.

You should remove and clean the water filter when you notice any deposits being left on the filter or if the pouring efficiency is impaired.

Removing the scale filter

- Allow the kettle to cool down fully.
- Disconnect the appliance from the mains electrical supply.
- Make sure that your hands are clean and free from soap, etc or anything which might taint the water.
- Empty the kettle and remove the lid. Remove the filter by pushing the catch firmly from inside the kettle, then lift up (fig. 1).
- Rinse under a tap while brushing with a soft brush (fig. 2).
- Replace the filter sliding it firmly down (fig. 3).

Descaling

It is vital to clean and descale the kettle and filter regularly in order to maintain it in good working order. Failure to descale your kettle may invalidate your guarantee.

- It is recommended to use specific (store bought) products for descaling of kettles.
- When limescale starts to build up on the heating element, buy a suitable descaler and descale your kettle. After descaling, boil with fresh water several times and discard. Clean any descaler off the kettle – it can damage the parts.
- If the filter requires descaling, remove the filter and place into the kettle whilst descaling.
- Ensure that the electrical connections are completely dry before using the kettle.



Living innovation
意大利 · 德龙

★若有任何需求请与下述地址联系:

☆德龙键伍贸易 (深圳) 有限公司

地址: 深圳市罗湖区嘉宾路4018号
爵士大厦23AB01室

电话: (0755) 25904230

传真: (0755) 25904977

邮编: 518001

客服热线: 800-988-1668

☆德龙公司上海分公司

地址: 上海市中山北路3553号
伟大厦1511-1515室

电话: (021) 51088098

传真: (021) 62453368

邮编: 200062

网址: www.delonghi-china.com

☆德龙公司北京分公司

地址: 北京市崇文区龙潭路甲3号
翔龙大厦E05室

电话: (010) 67185569

传真: (010) 67187574

邮编: 100061

De' Longhi Appliances via Seitz, 47 - 31100 - Treviso - Italia