



---

# KBO Series

KETTLE  
Instructions for use

BOUILLLOIRE  
Mode d'emploi

ةيالغ  
إرشادات الاستعمال



---

**DeLonghi**

**EN**

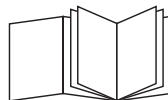
page 4

**FR**

page 8

**SA**

صفحة 2



## ELECTRICAL CONNECTION (UK ONLY)

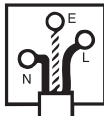
- A) If your appliance comes fitted with a plug, it will incorporate a 13 Amp fuse. If it does not fit your socket, the plug should be cut off from the mains lead, and an appropriate plug fitted, as below. **WARNING:** Very carefully dispose of the cut off plug after removing the fuse: do not insert in a 13 Amp socket elsewhere in the house as this could cause a shock hazard. With alternative plugs not incorporating a fuse, the circuit must be protected by a 15 Amp fuse. If the plug is a moulded-on type, the fuse cover must be re-fitted when changing the fuse using a 13 Amp Asta approved fuse to BS 1362. In the event of losing the fuse cover, the plug must NOT be used until a replacement fuse cover can be obtained from your nearest electrical dealer. The colour of the correct replacement fuse cover is that as marked on the base of the plug.
- B) If your appliance is not fitted with a plug, please follow the instructions provided below:

**WARNING - THIS APPLIANCE MUST BE EARTHED**


### IMPORTANT

The wires in the mains lead are coloured in accordance with the following code:

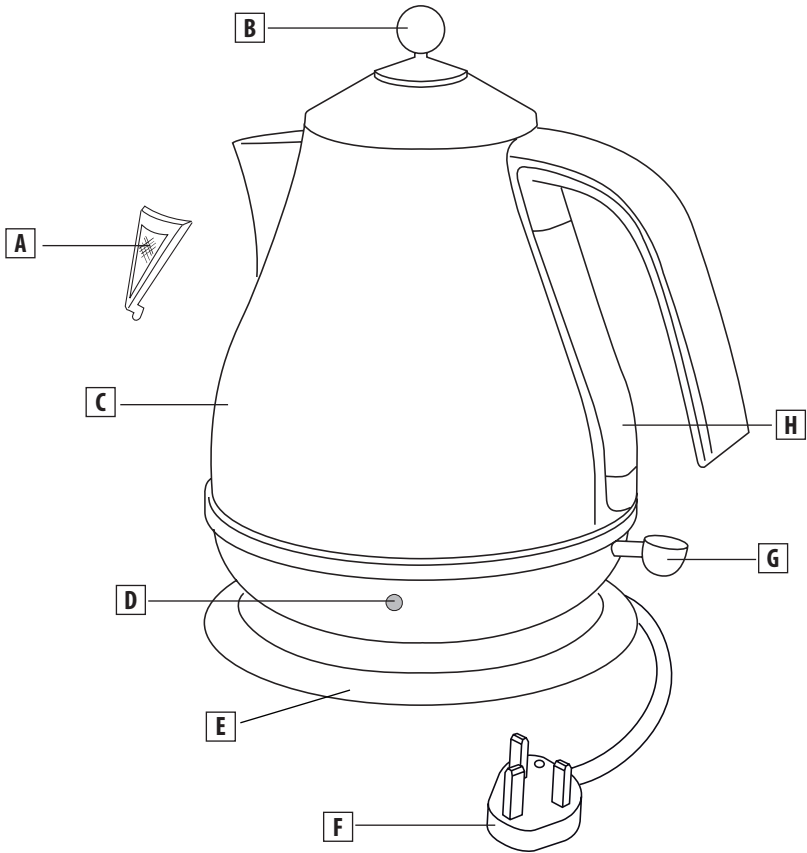
Green and yellow:	Earth
Blue:	Neutral
Brown:	Live



As the colours of the wires in the mains lead may not correspond with the coloured markings identifying the terminals in your plug, proceed as follows:

The green and yellow wire must be connected to the terminal in the plug marked with the letter E or the earth symbol  or coloured green or green and yellow. The blue wire must be connected to the terminal marked with the letter N or coloured black.

The brown wire must be connected to the terminal marked with the letter L or coloured red.



## INTRODUCTION

Thank you for choosing a De'Longhi product. Please take a few moments to read the instructions to avoid risks or damage to the appliance.

### Symbols used in these instructions

Important warnings are identified by the symbols below. It is important to respect the warnings. Failure to respect the warnings could lead to electric shock, serious injury, burns, fire or damage to the appliance.



**Danger!**

Failure to observe the warning may result in life threatening injury by electric shock.



**Important!**

Failure to observe the warning could result in injury or damage to the appliance.



**Danger of burns!!**

Failure to observe the warning could result in burns or scalds.



**Please note:**

This symbol indicates recommendations and important information for the user.

## IMPORTANT WARNINGS

### Safety warnings



**Danger!**

- Avoid spillage on the connector.



**Important!**

- The appliance is exclusively for the use of boiling water. Any other use is to be considered inappropriate and therefore dangerous. The manufacturer cannot be held responsible for eventual damage caused by inappropriate, improper or irresponsible use and/or for repairs made to the product by unauthorised personnel.
- The appliance is designed and produced for domestic use only. It is

not suitable for use in: staff kitchens in shops, offices and other workplaces, farm houses, hotels, motels or other holiday accommodation, guest houses.

- This appliance can be used by children aged 8 upwards and by persons with reduced physical, sensory or mental capabilities or who lack of experience and knowledge if they are supervised or have been given instructions concerning use of the appliance in a safe way and understand the hazards involved.

Children must not play with the appliance. Cleaning and user maintenance must not be carried out by children unless they are older than 8 and supervised. Keep the appliance and its cord out of the reach of children under 8 years of age.

- The power cable must not be replaced by the user as this requires the use of special tools.  
If the supply cord is damaged, it must be replaced by the manufacturer, its service agent or similarly qualified persons in order to avoid a hazard.
- Use the kettle only with the power base supplied (and vice versa).
- Do not operate the kettle on an inclined surface.
- Do not operate the kettle unless the element is fully immersed.
- To prevent damage to the appliance do not use alkaline cleaning agents when cleaning, use a soft cloth and a mild detergent.



**Danger of burns!!**

- Do not remove the lid while the kettle

is boiling.

- If the kettle is overfilled, boiling water may overflow.
- The heating element surface is subject to residual heat after use.

**i Please note:**

- Never move the kettle while it is in use.



**Danger!**

- To protect against electrical hazards do not immerse the mains lead, plug power base or kettle in water or any other liquid. Do not use in the bathroom or near any source of water. Do not use outdoors.
- Remove the plug from the mains socket when not in use and before cleaning. Allow the kettle to cool before cleaning.
- Do not use the kettle if you have wet hands.
- Do not place any utensils into the kettle.

The use of accessory attachments not recommended by the appliance manufacturer may result in fire, electric shock or personal injury.



**Important!**

- Take care when pouring - do not over-tilt the kettle as water may enter into the switch mechanism.
- Close supervision is necessary when any appliance is used near children.
- Do not operate this kettle if the mains lead or plug is damaged, if the kettle malfunctions, or has been damaged in any manner. It must be returned to an authorised service agent for repair or replacement in order to avoid hazard.



**Danger of burns!!**

- Do not touch hot surfaces i.e. body or lid. Use handles or knobs.
- Water can remain hot for a long time after boiling and can present a scald hazard. Keep the kettle and the mains lead away from the edge of the work surface and out of the reach of children.
- Do not allow the mains lead to hang over the edge of the table or work surface.
- Avoid contact with steam coming out of the spout when pouring, and out of the lid or spout when refilling.

- Keep the kettle, the power base, and the mains lead away from hotplates, hobs or burners.



**Please note:**

- Remove the kettle from its power base before filling.
- Do not use the kettle for any purpose other than heating water.
- De'Longhi will not accept any liability if the appliance is subject to improper use, or failure to comply with these instructions.
- Never use the kettle without its lid and filter.
- Position the kettle properly on the power base before switching on.



This appliance conforms to EC Regulation 1935/2004 on materials and articles intended to come into contact with food.

**Disposing of the appliance**



The appliance must not be disposed of with household waste, but taken to an authorised waste separation and recycling centre.

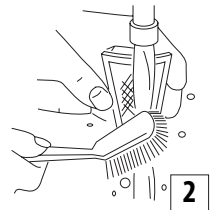
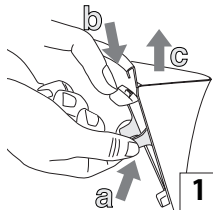
**DESCRIPTION**

- A** Removable filter
- B** Removable lid
- C** Kettle body
- D** Power-on indicator lights
- E** 360° base with cord storage
- F** Plug
- G** ON/OFF switch
- H** Water level indicator

**USE**

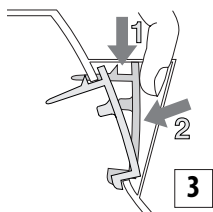
**Before use**

- Remove all packaging from the kettle and power base.
- Remove any labels from the outer stainless steel surfaces.
- Remove the filter (fig. 1) and wash with water (fig. 2). Refer to "Removing the scale filter".



- Fill the kettle and boil.

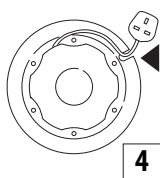
- The boiled water should be discarded and the kettle rinsed out with cold water. This procedure should be carried out three times, to remove any manufacturing dust, etc.
- After the kettle has been rinsed out, re-fit the filter (fig. 3).



### In use

With the specially designed power base and central connector, you can now set the kettle on the base at any angle, from any position.

- Release cord from storage base and adjust length by winding around the base to give the correct cord length to reach the plug socket to be used (fig. 4).
- Do not leave loose cord hanging over the edge of work surfaces.



### Filling

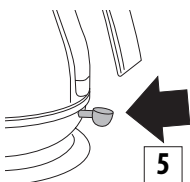
- Remove the kettle from the base unit before filling.
  - Open lid and fill kettle to desired level.
- Do not fill with less than 0,3 litre of water** to prevent the kettle running dry while operating; misuse of this kind will shorten the life of the element.

**Do not fill with more than 1.7 litres of water** (up to the MAX level).

**If the kettle is overfilled, there is a risk that boiling water may be ejected causing burns.**

### Switching on

- Plug the power base into the mains socket.
- Place kettle on power base.
- Press the ON/OFF switch down (fig. 5) to switch the kettle on.
- The pilot light will switch on.
- The kettle will automatically switch off once the water is



boiled (the ON/OFF switch will click upwards and the lights will switch off).

- To turn the kettle off before the water boils, you may move the ON/OFF switch up to the OFF position, or simply lift the kettle from its base - it will switch off and the switch will return to the OFF position automatically.

### Pouring

- Remove the kettle from the power base and carefully pour out the water. Do not tilt the kettle suddenly or pour water out at too sharp an angle.
- When you lift the kettle from the base, you may see moisture on the top surface of the base. Condensation on the base is perfectly normal, and should not be a cause for alarm.

### SAFETY DEVICES

#### 1) Automatic ON/OFF switch:

Your kettle is fitted with an ON/OFF switch which automatically switches off once the water has boiled. If the kettle has just boiled, wait a minute or so before re-boiling the kettle. Do not attempt to hold the ON/OFF switch in the on position or adjust the switch mechanism.

#### 2) Safety cut-out:

If the kettle is switched ON with too little or no water, it is protected against damage by a safety cut-out which will switch off the power. If this cut-out operates, disconnect the kettle from the mains supply and leave to cool down before refilling with cold water (otherwise the element could be damaged).

- 3) If kettle is lifted from base while operating (ON), it will automatically switch off.

### MAINTENANCE

#### Cleaning the kettle

- Allow the kettle to cool down fully and disconnect the appliance from the mains before cleaning.
- Do not immerse the kettle or base in water.
- Use a soft dampened cloth to wipe the outside of the kettle and dry with a soft, dry cloth.
- DO NOT use metal polish or harsh scouring agents.
- Ensure that all connectors and sockets are kept dry.

#### Scale

Scale is mainly calcium carbonate (chalk), a harmless, naturally occurring mineral found in most water supplies. "Hard" water contains more of this mineral than "soft" water.

When the water is heated, the minerals in the water solidify, making the water appear cloudy. These minerals form a thin film on the walls, element and on the surface of the water. The water may look like it has white coloured pieces of plastic floating on the surface. On traditional kettle elements, scale forms a hard white "crust" which adversely affects performance and reduces the life of the element. As soon as you notice a film forming on the water, or, when cleaning the filter, if you notice a film on the walls or the element, simply rinse the kettle and wipe it out.

### Scale filter

Your kettle is fitted with a scale filter to prevent loose particles of scale being poured into your beverage. This filter is both removable and washable.

The frequency with which you will need to clean any scale deposits from your filter will depend on the hardness of water in your area and how often you use the kettle. You should remove and clean the water filter when you notice any deposits being left on the filter or if the pouring efficiency is impaired.

### Removing the scale filter

- Allow the kettle to cool down fully.
- Disconnect the appliance from the mains electrical supply.
- Make sure that your hands are clean and free from soap, cream or anything which might taint the water.
- Empty the kettle and remove the filter as shown in fig. 1.
- Rinse under a tap whilst brushing with a soft brush (fig. 2).
- Replace the filter (fig. 3).

### To clean the scale filter

It is vital to clean and descale regularly in order to maintain good working order

- Use descaler for kettles. When limescale starts forming on the heating element, buy a suitable descaler and descale according to the instructions given on the descaler pack. After descaling, boil the kettle repeatedly with fresh water and rinse thoroughly to completely eliminate all residues of descaler which could damage the appliance. If the filter requires descaling, remove and immerse in the same descaling solution.
- Make sure electric parts are completely dry before using the kettle.

## TECHNICAL CHARACTERISTICS

Power supply  
Absorbed power

See rating plate  
“