



无绳立式吸尘器

CORDLESS STICK CLEANER

使用说明书

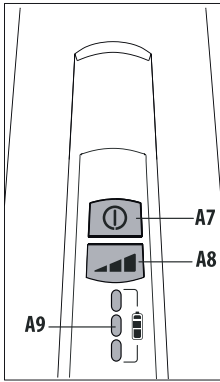


XLR25LM.BL & XLR18LM.R

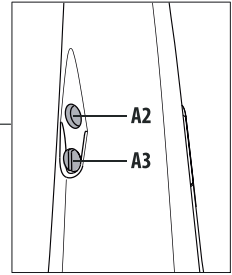
目 录

使用前的准备工作	2
电量的显示说明	4
过滤网的清洁	5
拆除充电电池	5
重要的安全警告	6
描述	6
充电	6
更换充电电池	7
拆除充电电池	7
机器的废旧处理	7

A



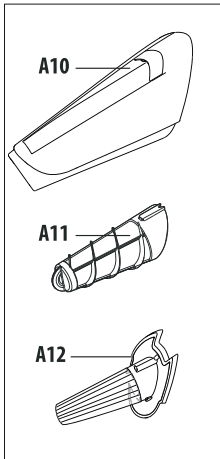
A1



A6

A4

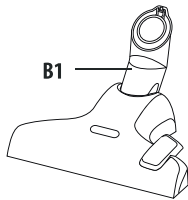
A5



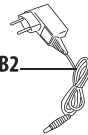
A13

B

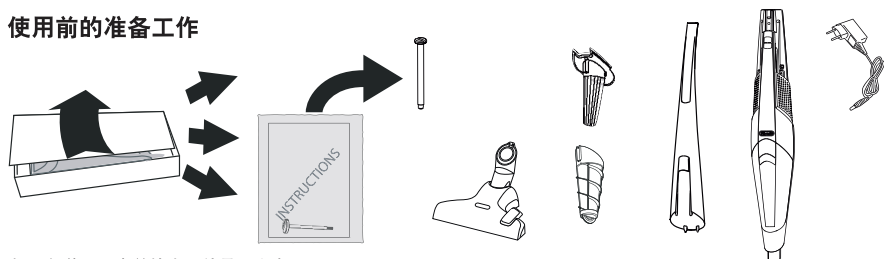
B1



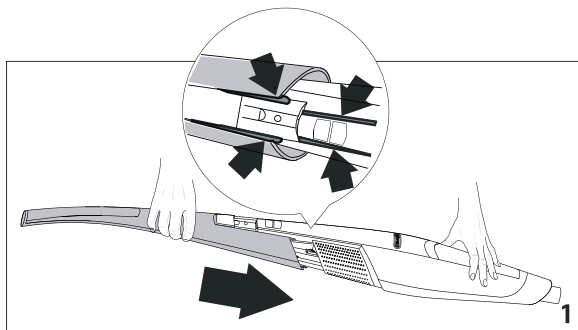
B2



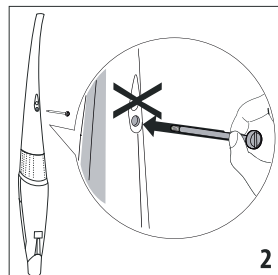
使用前的准备工作



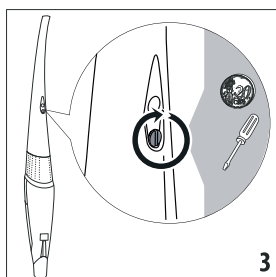
拆开包装，取出并检查配件是否齐全。



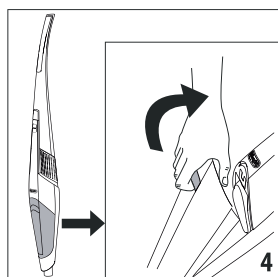
安装把手



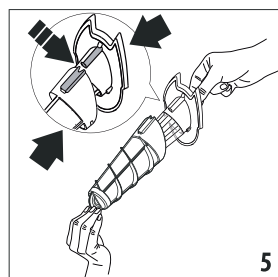
将配备的螺丝插进手柄背后的螺丝孔中



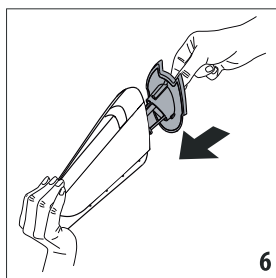
用螺丝刀拧紧螺丝



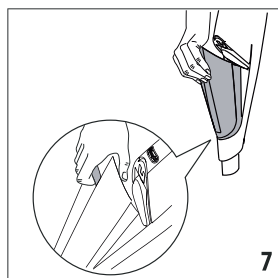
取出尘盒



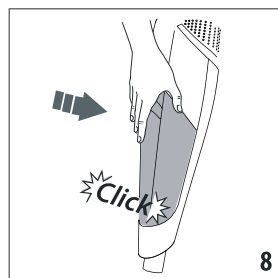
安装前置过滤网和细小颗粒过滤网



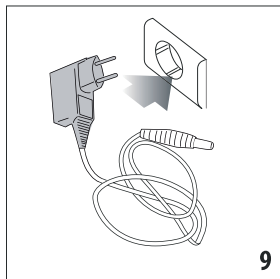
将安装好的过滤网装入尘盒



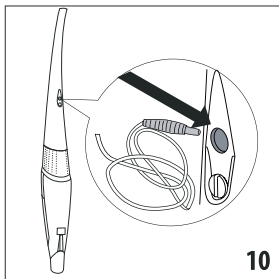
将尘盒安装到手柄上



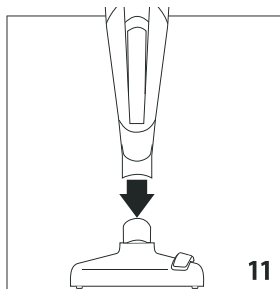
安装好后会听到“咔嗒”声



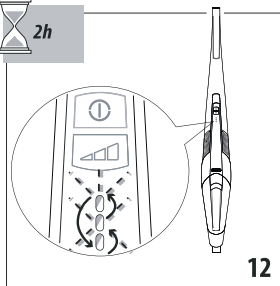
9 电池充电器接通电源



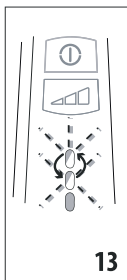
10 将电池充电器的另一头插入到吸尘器上的电池充电器的连接口上



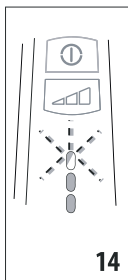
11 将地毯/地板两用清洁刷安装到手柄上



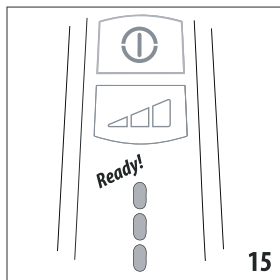
12 连续充电2小时，充电时三个指示灯循环闪烁



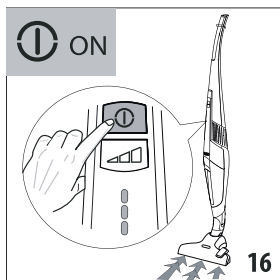
13 当充满一格电时，最下面的指示灯常亮，最下面的两个指示灯循环闪烁



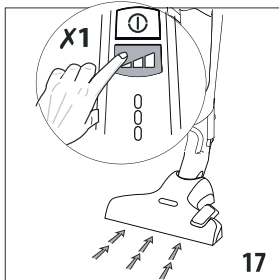
14 当充满两格电时，最下面的两个指示灯常亮，最上面的指示灯循环闪烁



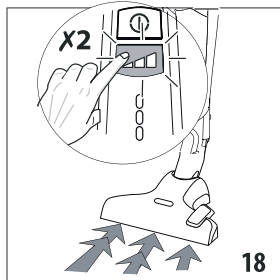
15 当完全充满电时，三个指示灯常亮



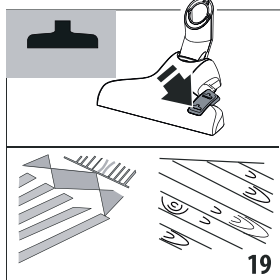
16 按开启/关闭按钮，开启机器



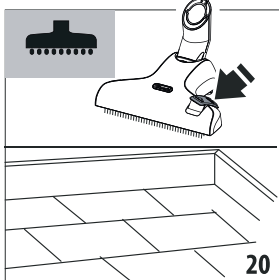
17 根据实际需求选择吸力，按一下选择两档吸力



18 根据实际需求选择吸力，按两下选择一档吸力



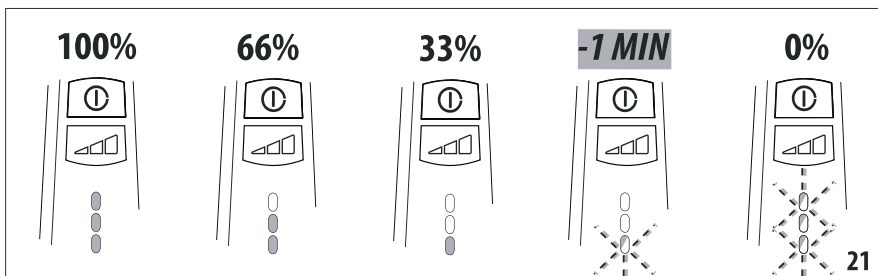
19 如需清洁地毯，选择如图所示的图标



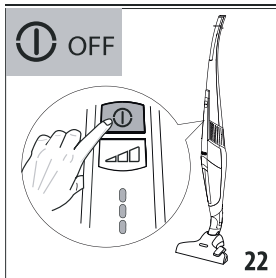
20 如需清洁地砖，选择如图所示的图标

电量的显示说明 - Operating time

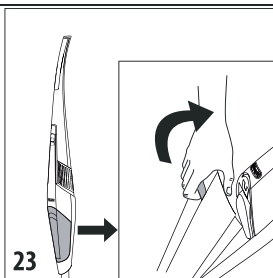
三个指示灯常亮，电量100%。两个指示灯常亮，电量剩余66%。一个指示灯常亮，电量剩余33%。一个指示灯闪烁，最多可使用1分钟。三个指示灯闪烁，电量耗尽。



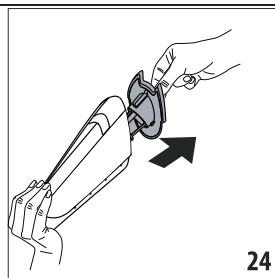
尘盒的清洁



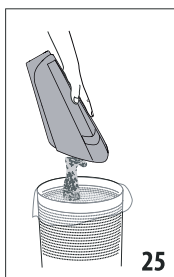
关闭机器的电源



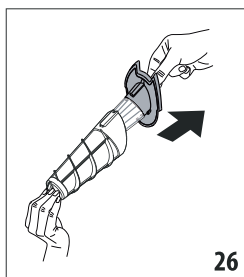
取出尘盒



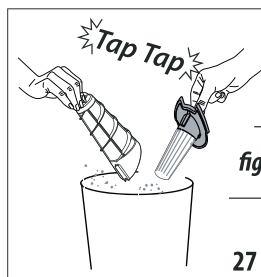
取出过滤网



将尘盒中的垃圾倒入垃圾桶



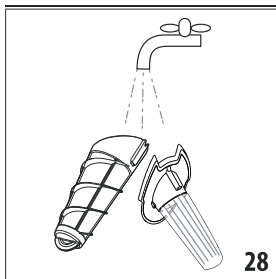
拆下前置过滤网，清空前置过滤网和细小颗粒过滤网中的垃圾



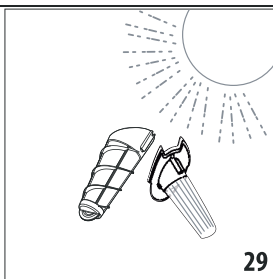
将尘盒装回手柄



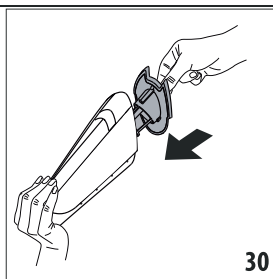
过滤网的清洁



用流动的水清洗前置过滤网和细小颗粒过滤网



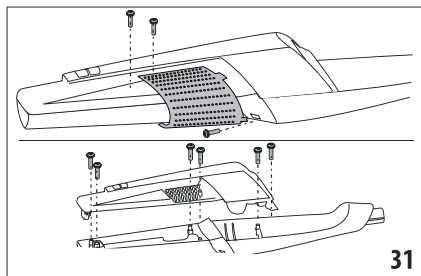
在太阳下将两个过滤网晒干



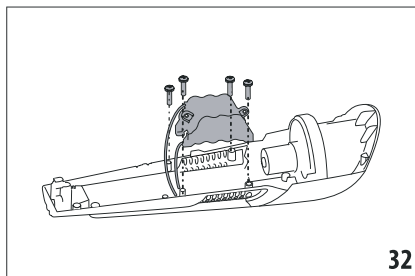
将过滤网装回尘盒

... →

拆除充电电池 - Removing the battery



拆除如图所示的所有螺丝



拆除如图所示的所有螺丝，然后取出电池

重要的安全警告

· 请仔细阅读此说明书。本机器仅限家庭使用，请按说明书指示及所提供的配件进行操作。对于不恰当地使用而造成的机器损坏，制造商不负任何责任，如吸碎石，灰灰等。



重要!

- 本机器只能低电压的情况下进行操作，详见机器上的标识。
- 在操作机器之前，请先确认已安装好过滤网。
- 8岁以上的儿童或有心理、身体或者感官障碍、或不具备足够的经验或者知识的人员（包括儿童）不允许使用该电器，除非有对他们的安全负责的人密切监督并进行指导，并清楚知晓其危险性。切勿让儿童玩弄本机器。切勿在无人监管的情况下，让儿童进行清洁和保养。
- 定期地检查过滤网，如有必要请用刷子进行清洁或更换。
- 机器在运转时，眼睛、耳朵，鼻子等要远离灰尘吸入口。
- 切勿吸入火柴或正燃烧的烟头。
- 切勿将机器和电池充电器浸入水中或其他液体中。切勿往机器和电池充电器上泼溅水。
- 这只是一台家用电器，不适合在以下场所使用：商场的员工餐厅，办公室或其他工作环境；牧场旅馆；旅馆、汽车旅馆或其他住宅性环境的住客；家庭式旅馆。
- 切勿将机器放置在室外或潮湿的地方。
- 切勿将机器靠近热源（烤箱，加热器等）。
- 切勿在机器的电池充电器或电源线损坏，或机器本身损坏的情况下使用。
- 制造商有权在不作通知的情况下，更改本机的零部件和附件。请使用机器原配的附件及工具，以保持机器的效能，以免保修失效。



请注意:

为了避免损坏机器的马达，切勿在未安装过滤网的情况下使用机器。

描述

A、机器的描述

A1、把手/手柄

A2、吸尘器上的电池充电器的连接口

A3、锁定螺丝

A4、手柄装配指示

A5、空气出风口

A6、控制面板

A7、开启/关闭按钮

A8、吸力选择按钮（高功率、节能模式）

A9、电量显示指示灯（LED）

A10、尘盒

A11、前置过滤网

A12、细小颗粒过滤网（易耗品）

A13、吸入口



小贴士:

易耗品不属于保修范围

B、附件

B1、地毯/地板两用清洁刷

B2、电池充电器

充电

重要: 只能使用原厂生产的充电电池。切勿在低于0°C或高于40°C的情况下充电。



请注意:

首次使用机器时，电池需连续充2小时。本型号的机器具有快速充电的功能，连续充电30分钟可以使用5分钟。机器的充电时，不能使用。充电即将完成时，三个LED指示灯都会亮起。当电量耗尽时，三个LED指示灯闪烁，机器停止工作。每次使用完后，请及时充电。确保使用时，机器已充满电。机器连续不断的充电没有任何的安全风险。如果长时间不使用（如假期---），请拔下电源的插头。每次充满电后，机器的使用时间如下：

型号	两档 (节能模式)	一档 (高电量)
XLR18LM	30分钟	20分钟
XL.R25LM	35分钟	22分钟

更换充电电池

当电池耗尽后，请到德龙授权的服务中心更换电池。切勿使用其他类型的电池。

拆除充电电池

如需拆除充电电池，请与德龙授权的服务中心联系或按如下步骤进行操作：

- 在拆除电池前，请确认电池已用完。
- 松开螺丝钉锁（A3），然后拆下把手/手柄（A1）。
- 取出尘盒（A10）。
- 拆下护栏及罩子（如图31）。
- 松开螺丝钉（如图32），取出电池。



重要!

在拆除电池前，请确保没有连接电池充电器。

机器的废旧处理

根据欧盟EC2002/96号的指令，本机器不能作为一般的家用垃圾进行处理，必须交于授权的专业回收机构进行处理。



机器报废时，必须拆下电池。切勿将电池作为一般家电进行处理，需将电池送到专业的回收机构进行处理。

FUNDAMENTAL SAFETY WARNINGS

- Read the instructions carefully. The appliance should be used for domestic cleaning only following these instructions and only with the tools supplied. The manufacturer declines all liability for damage deriving from improper use of the appliance, for example to vacuum up rubble, ash, etc.



Important!

- The unit should only be operated at very low safety voltage corresponding to the marking on the device.
- Before starting the appliance, make sure the filters are in position.
- This appliance can be used by children aged from 8 years and above and persons with reduced physical, sensory or mental capabilities or lack of experience and knowledge if they have been given supervision or instruction concerning use of the appliance in a safe way and understand the hazards involved. Children shall not play with the appliance. Cleaning and user maintenance shall not be made by children without supervision.
- Check the filters regularly and if necessary brush or replace them.
- Keep the suction outlet away from eyes, ears, nose etc when the appliance is in operation.
- Never vacuum up matches, or cigarette ends when still lit.
- Never immerse the appliance or battery charger in water or other liquid. Do not splash water on the appliance or battery charger.
- This is a household appliance only. It is not intended to be used in: staff kitchen areas in shops, offices and other working environments; farm houses; by clients in hotels, motels and other residential type environments; bed and breakfast type environments.
- Do not store the appliance outdoors or in wet places.
- Do not place the appliance close to heat sources (ovens, heaters).
- Do not use the appliance if the battery charger, its power cable or the appliance itself is damaged.

- The manufacturer reserves the right to modify appliances and tools without warning. Original spare parts and tools should always be used to maintain the efficiency of your appliance and avoid invalidating the guarantee.



Please note:

To avoid damage to the motor, never operate the appliance without filters.

DESCRIPTION

A. Description of the appliance

- A1 Handgrip/handle
- A2 Battery charger connector on cleaner
- A3 Lock screw
- A4 Handle guides
- A5 Air outlet grille
- A6 Control panel
 - A7 ON/OFF button
 - A8 Power regulator button (high, energy saving)
- A9 Battery charge/operating time LEDs
- A10 Dust container
- A11 Pre-filter
- A12 Fine filter
- A13 Suction port

B. Accessories

- B1 Two position carpet/floor brush
- B2 Battery charger

CHARGING THE BATTERIES

IMPORTANT: Use the original battery charger supplied with the appliance only. Do not charge the appliance in temperatures of less than 0°C or more than 40°.



Please note:

Before using the appliance for the first time, the battery must be charged for two hours.

This model has a quick charge function allowing it to operate for five minutes with 30 minutes charging.

While being charged, the appliance cannot be used. At the end of the charging cycle, all three LEDs are lit. When the battery is completely flat, the three LEDs flash and the appliance does not start up. It is good practice to charge the appliance after each cleaning session to ensure it is always ready for use with the battery fully charged. The appliance can be left constantly in charge in complete safety. In the event of long absences (holidays...) it is best to unplug it. After each complete charge, the appliance can operate for the following times:

TYPE	Power 1 (high)	Power 2 (Energy saving mode)
XLR18LM	20 min	30 min
XLR25LM	22 min	35 min

REPLACING THE BATTERIES

When the batteries are exhausted, have them replaced by your local customer services. Do not use other types of batteries.

REMOVING THE BATTERIES

To remove the batteries, contact your local customer services or proceed as follows:

- Make sure the batteries are completely flat before removing.
- Remove the handle (A1) by unscrewing the lock screw (A3).
- Remove the dust container (A10).
- Remove the grille and casing (see fig. 31).
- Unscrew the fixing screws (see fig. 32) and disconnect the battery.



Important!

Make sure the appliance is not connected to the battery charger before removing the batteries.

DISPOSING OF THE APPLIANCE



The appliance must not be disposed of with household waste, but taken to an authorised waste separation and recycling centre. If you dispose of the appliance, you must remove the battery.

Never dispose of the battery with household waste. Take it to a special collection point for recycling.



★若有任何需求请与下述地址联系:

☆ 邑隆贸易(上海)有限公司

地址: 上海市中山北路3553号伸大厦2001-2016室

电话: (021) 3135 8858 传真: (021) 3135 8262 邮编: 200062

客户热线: 400 827 1668

网址: www.delonghi.com.cn

5719210361/07.15

update 2015/5/22